

# SVELTO

The high strength, light weight solution for Domestic Sewer and general Municipal applications

## Features

- Cover and frame is EN 124:2015 compliant
- Light weight, easy to handle and install, up to 70% lighter than the iron equivalent
- Ductile iron frame with a single seal groove for odour resistance
- Corrosion resistant even in the most aggressive environments
- No resale value to the scrap market
- Rigid and stable assembly due to its ductile iron frame
- Non-conductive of stray voltage or heat
- Coarse skid resistant upper surface featuring the trademarked 4L non-slip pattern
- UV resistant protective surface layer



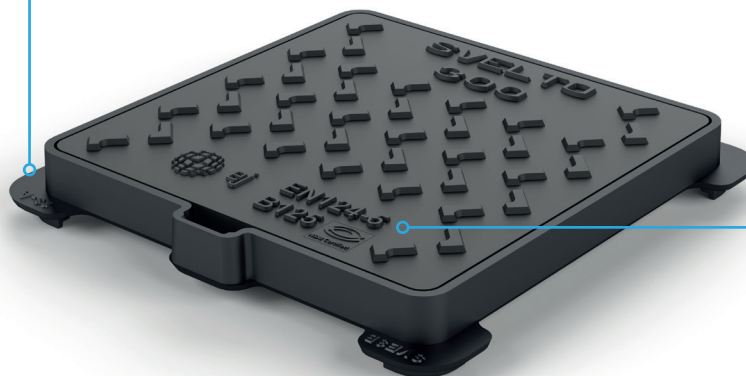
Cover available in any RAL colour



Ductile iron frame for added rigidity



Frame with single seal groove to help prevent odours escaping from the chamber



Third party certification to EN 124-5:2015 by the NSAI

Product reference	Class	Product code	Clear opening (mm)	Overall dimensions (mm)	Frame height (mm)	Total weight (kg)
<b>SVELTO 300</b>	B125	721001	200 x 200	300 x 300	30	5
<b>SVELTO 400</b>	B125	721002	300 x 300	400 x 400	30	8
<b>SVELTO 500</b>	B125	721003	400 x 400	500 x 500	30	11
<b>SVELTO 600</b>	B125	721004	500 x 500	600 x 600	31	15
<b>SVELTO 700</b>	B125	721005	600 x 600	700 x 700	31	19