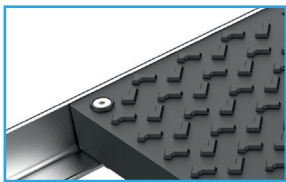


# ELITE TRENCH

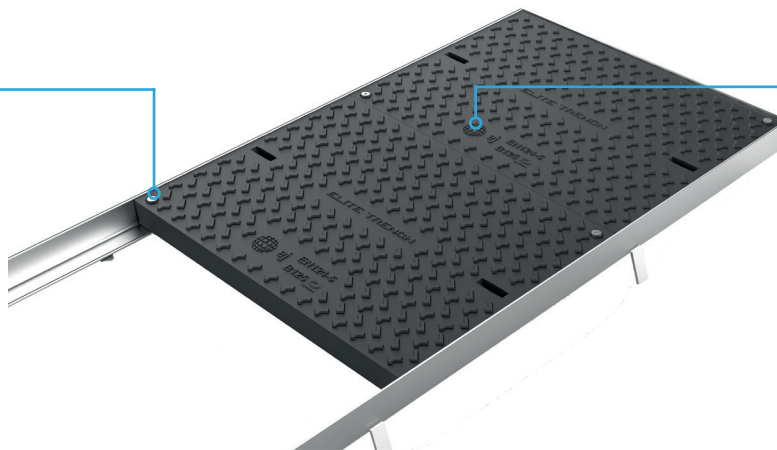
A light weight, high performing access solution for long cable trench / duct runs

## Features

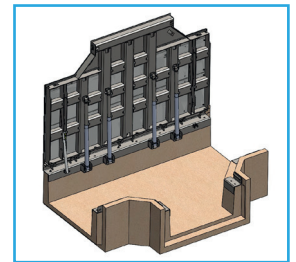
- Cover and frame is EN 124:2015 compliant
- Composite cover in a galvanised steel frame
- Designed to allow for convenient and safe access to continuous ducts runs
- Galvanised steel frame with anchoring lugs
- Cover with non-slip 4L design
- Excellent insulator against heat and electricity
- Can be installed onto our custom galvanized steel frame or in an existing rebate
- Proprietary UV resistant surface layer that will not fade or crack
- Custom colours and logos available
- Optional assist lift design for single person operation with a max lift effort of 10kg



Each cover is locked with stainless steel allen head screws



Third party certification to EN 124-5:2015 by the NSAI



Optional hinged cable trench cover with lift assistance

**Bespoke locking bolts available to provide increased security on critical networks**

Product reference	Class	Product code	Clear opening (mm)	Overall dimensions (mm)	Frame height (mm)	Weight (Kg)
<b>ELITE TRENCH 1</b>	B125	721056	420 x 568	510 x 648	60	27
<b>ELITE TRENCH 2</b>	B125	721055	918 x 568	1008 x 648	60	47
<b>ELITE TRENCH 3</b>	B125	721047	1416 x 568	1506 x 648	60	67
<b>ELITE TRENCH 4</b>	B125	721073	1916 x 570	2006 x 650	60	88