

AZK (Junction Box)

Designed for the European Telecom market. The light weight alternative to concrete.

Features

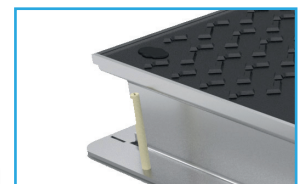
- Cover and frame is EN 124:2015 compliant
- Composite cover in a galvanized steel frame
- Rigid steel frame in 100 mm depth to suit block paving installation
- 4 n°. levelling bolts incorporated into frame design
- Cover with 2 opening keyways
- Cover locked with 4 hexagon V2A screws



Cover available in any RAL colour



Rigid steel frame, in 100 mm depth to suit block paving installs



Cover with 2 opening keyways



Cover locked with 4 hexagon V2A screws

Bespoke locking bolts available to provide increased security on critical networks

| Product reference | Class | Product code | Clear opening (mm) | Overall dimensions (mm) | Frame height (mm) | Total weight (kg) |
|-------------------|-------|--------------|--------------------|-------------------------|-------------------|-------------------|
| AZK65 B125 NSAI | B125 | 721061 | 650 x 400 | 738 x 488 | 100 | 19 |