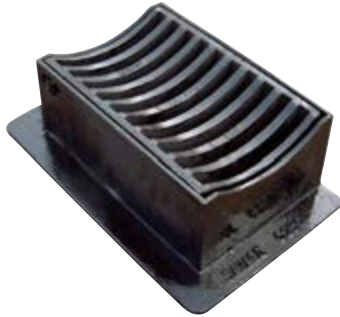
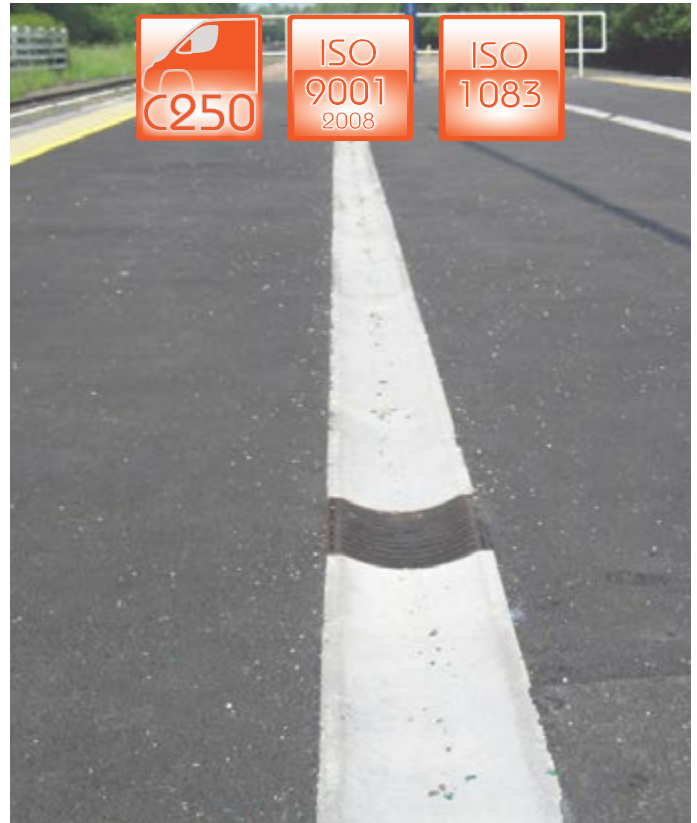




D58-2



D58-4



## Proprietary Drainage Gratings

### Features

- Manufactured to class C250 where appropriate
- Suitable for areas with slow moving heavy traffic
- Captive hinged design (except D46-1)
- 25 tonnes safe test load
- 3 flanged products are for group 3 areas
- Ductile iron to ISO 1083 for improved weight to strength ratio
- Black coated finish to BS 3416



D58-1



D46-1

Code	Over Grate (mm)	O/all Frame (mm)	Frame Depth (mm)	Dish Depth (mm)	Type	Optional Extras
Savage Blogully						Blogullies are dished to suit proprietary block paving drainage channel systems with a block size of 200 x 200mm over the top)
D58-2	340 x 170	400 x 200	145	15	Blogully	
D58-3	340 x 170	400 x 200	145	15	Blogully	
D58-1	170 x 170	200 x 200	125	15	Blogully	
Savage Congully						Congullies are dished to suit proprietary 225 x 125mm (10"x5") concrete channel systems
D58-4	360 x 240	375 x 250	145	30	Congully	
D58-5	360 x 240	375 x 250	145	30	Congully	
Savage Gully Chute Connector						Gully chute connector (D46-1) is a sub-kerb gully grating installation and does not need a load category. Suitable for KD41D, KD50D, KD115, KD52D, KD50CN, KD41C & DSUB.
D46-1	415 x 320	515 x 420	180		Gully Chute Connector	

Product dimensions and weights are approximate and may vary. For exact product data, contact sales from the details provided.