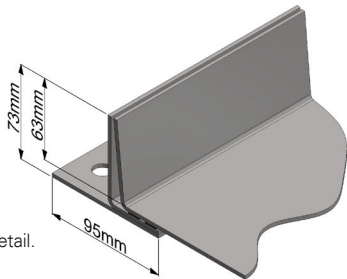
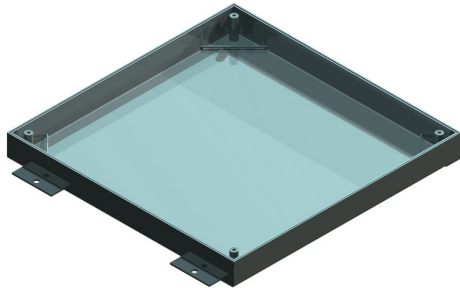


**PS4500**  
**Single Stainless Steel Recessed Tray Type**  
**Cover & Frame**  
**FACTA Class B**



Section through detail.

Single stainless steel recessed tray type cover and frame. Designed to be infilled with C25 concrete to achieve full loading. Recessed lids are designed for either full concrete infill or concrete infill with upto a 15 mm tile floor finish. Trays are locked with M10 Allen Head screws as standard and can be manufactured in either grade 304 or 316 stainless steel. All products are manufactured under an ISO 9001 Quality system.

**Options:**

- Finish - Self Colour
- Finish - Glass Bead Blast
- Finish - Electro Polish
- Fire Rated

Standard Sizes

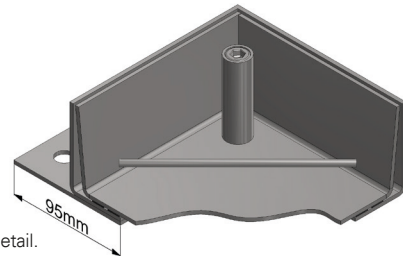
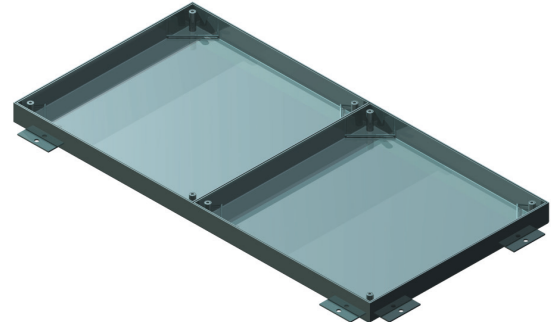
Clear Opening (mm)	Suffix	Clear Opening (mm)	Suffix
300 x 300	A	750 x 750	F
450 x 450	B	900 x 600	G
600 x 450	C	900 x 750	H
600 x 600	D	900 x 900	J
750 x 600	E		

Non-standard sizes available

**Specification/Ordering:**

Please choose the required product code, size suffix and any extras i.e. PS4500E Stainless304/Self Colour

**PS4550**  
**Twin Stainless Steel Recessed Tray Type**  
**Cover & Frame**  
**FACTA Class B**



Section through detail.  
 Corner Detail

Twin stainless steel recessed tray type cover and frame. Designed to be infilled with C25 concrete to achieve full loading. Recessed lids are designed for either full concrete infill or concrete infill with upto a 15 mm tile floor finish. Trays are locked with M10 Allen Head screws as standard and can be manufactured in either grade 304 or 316 stainless steel. PS4550 units are fitted with a centre removable beam. All products are manufactured under an ISO 9001 Quality system.

**Options:**

- Finish - Self Colour
- Finish - Glass Bead Blast
- Finish - Electro Polish
- Fire Rated

Standard Sizes

Clear Opening (mm)	Suffix	Clear Opening (mm)	Suffix
1200 x 600	L	1500 x 900	R
1200 x 750	M	1800 x 600	T
1200 x 900	N	1800 x 750	V
1500 x 600	P	1800 x 900	W
1500 x 750	Q		

Non-standard sizes available