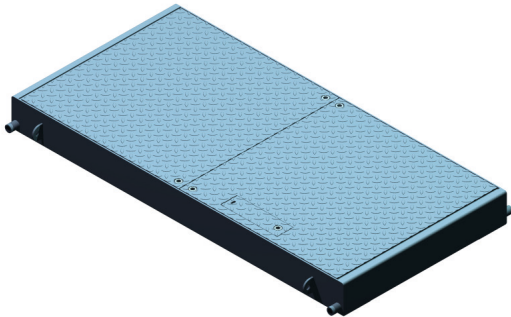


PS1650

Twin Bookend Flush Spring Assisted Cover & Frame - FACTA Class AA, AAA, B, C, D



Twin, bookend hinged, flush fitting, spring assisted cover and frame. Chequer plate solid top lids underbraced where necessary to meet the stated load rating. Frames are fitted with built-in lifting points to aid site positioning and fixing holes within the frame. The covers are M16 locking and are fitted with a polyethylene seal as standard. PS1650 units are fitted with a centre removable beam. All products are manufactured under an ISO 9001 Quality system. This product is hot dip galvanised to BS EN ISO 1461 as standard.

Options:

- Open Mesh Working Platform Safety Grid - /Grid1 (See p76)
- Jail Type Personnel Protection Safety Grid - /Grid2 (See p76)
- Lattice Type Fall Arrest Grid - /Grid3 (See p76)
- Recessed Padlock Point (Locked M16) - /RPP
- Sign fitted to Grid
- Frame Drainage - Internal, External, Both
- Barrier System (See p77)
- Cable Entry Point (See p78)
- Lifting Slots
- Blue Rope Facility
- Anti-Slip Coating (See p78)
- Levelling Bolts

Standard Sizes

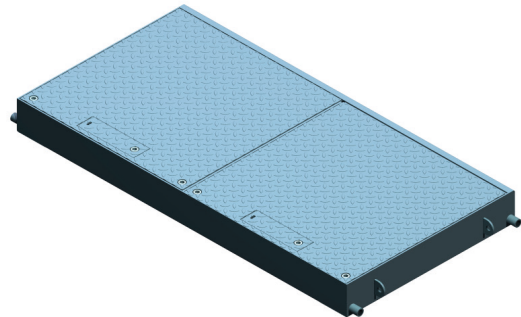
Clear Opening (mm)	Suffix	Clear Opening (mm)	Suffix
600 x 1200	L	750 x 1500	Q
750 x 1200	N	600 x 1800	T
900 x 1200	N	750 x 1800	V
600 x 1500	P	900 x 1800	W

Non-standard sizes available

Product Loading codes: FACTA Class AA = PS1651
 FACTA Class AAA = PS1652
 FACTA Class B = PS1654
 FACTA Class C = PS1655
 FACTA Class D = PS1656

PS1650

Twin Inline Flush Spring Assisted Cover & Frame - FACTA Class AA, AAA, B, C, D



Twin, inline hinged, flush fitting, spring assisted cover and frame. Chequer plate solid top lids underbraced where necessary to meet the stated load rating. Frames are fitted with built-in lifting points to aid site positioning and fixing holes within the frame. The covers are M16 locking and are fitted with a polyethylene seal as standard. PS1650 units are fitted with a centre removable beam. All products are manufactured under an ISO 9001 Quality system. This product is hot dip galvanised to BS EN ISO 1461 as standard.

Options:

- Open Mesh Working Platform Safety Grid - /Grid1 (See p76)
- Jail Type Personnel Protection Safety Grid - /Grid2 (See p76)
- Lattice Type Fall Arrest Grid - /Grid3 (See p76)
- Recessed Padlock Point (Locked M16) - /RPP
- Sign fitted to Grid
- Frame Drainage - Internal, External, Both
- Barrier System (See p77)
- Cable Entry Point (See p78)
- Lifting Slots
- Blue Rope Facility
- Anti-Slip Coating (See p78)
- Levelling Bolts

Standard Sizes

Clear Opening (mm)	Suffix	Clear Opening (mm)	Suffix
1200 x 600	L	1500 x 900	R
1200 x 750	M	1800 x 600	T
1200 x 900	N	1800 x 750	V
1500 x 600	P	1800 x 900	W
1500 x 750	Q		

Non-standard sizes available

Specification/Ordering:

Please choose the required product code, size suffix and hinge i.e. PS1652LBE/Grid2/RPP or PS1652LIL/Grid2/RPP

