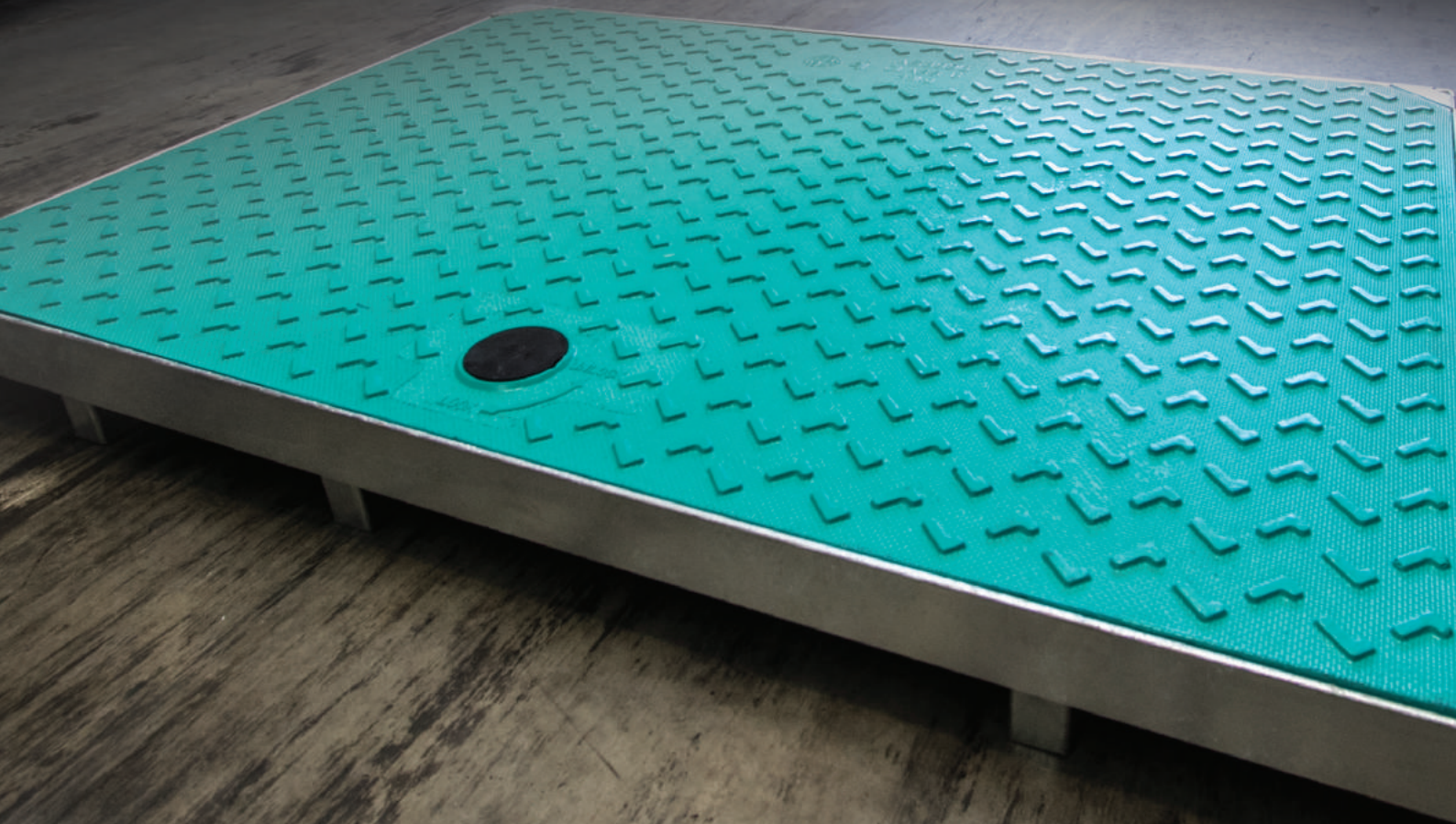




ej

# COMMANDO™

Side Entry Pit System



# COMMANDO™

## To Drain the Roadways, Storm the Trenches with COMMANDO™ by EJ.

In the most torrential downpours, if there's a roadway to drain, COMMANDO™ by EJ takes no prisoners. This is a solution that's been developed by a company that has specialized in stormwater, sewer, electrical and communications infrastructure for more than 135 years.

COMMANDO™ is a side entry pit system installed on footpaths and used where the preference is for an off-roadway drainage pit for inspection, cleaning and maintenance. This cutting edge solution is light in weight but is also strong and durable. After load testing to the Australian Standard AS3996, COMMANDO™ returned a zero permanent set. In short, the cover returns to shape with no distortion (even though under the ultimate test load, some small amount of permanent set is allowed for).

### NEW INSTALLATIONS

The COMMANDO™ is supplied with a hot dip galvanised mild steel frame for new installations in either a kerb in-line or a back-of-pit set up. The kerb in-line requires a heavier frame at the front leading edge to accommodate vehicles which may accidentally mount the kerb.

**COMMANDO™ K series: Kerb-in-Line**  
**COMMANDO™ B series: Back-of-Pit**

### RETRO FIT INSTALLATIONS

Where previous infrastructure side entry covers need to be upgraded, the COMMANDO™ cover can be supplied without a frame. The COMMANDO™ cover should retro-fit into much of the existing infrastructure without the need for additional site works.

### HARD CORE COMPOSITES BY EJ

The COMMANDO™ has been designed in-house by the EJ Composites Group. Our design team has an intimate knowledge of composite structures and specialises in product design and development in conjunction with the EJ owned GMI Composites, based in Michigan, USA. Composite covers by EJ are used by major water and power utilities extensively throughout the United States.

COMMANDO™ is manufactured with an advanced composite structure using glass fibres and a thermosetting resin which have a significantly higher resistance to UV light degradation than thermoplastic materials as used in injection moulded covers.

### THE PAY-OFFS

Features	Benefits
Size Doesn't Matter	Used for single or dual pit applications
Long Life	"Full composite" means solid, colour-impregnated, reinforced composite through and through not cheap plywoods or other fillers
Easy Lift	Being composite, COMMANDO™ is much lighter than metal
Anti-slip	Our proprietary 4L anti-slip raised pattern allows water to run off quickly while providing safe foothold grip
Secure	A precision aluminium locking mechanism prevents tampering
Easy Use	No special equipment; access by field staff armed with a commonly used Australian Standard lifting key
Quick, Lasting ID	Because the name and other lettering is molded in it lasts for the life of the cover (unlike a sprayed stencil ID)
Colour Choices	For easy ID, standard colour options are: green, grey, black, yellow and red. Select a colour that codes your organisation
Fire-safe	The composite is non-combustible

### DEPLOY THE FORCE

Why fight the temptation to deploy only the most elite force in covers today. Specify COMMANDO™ composites by EJ and take no prisoners. Talk to your nearest EJ COMMANDO™ frontline officer or to EJ HQ on 07 3216 5000.

\*Quality controlled - certified ISO9001 Quality Assurance Program. All tests are carried out by independent, third party firms.

# COMMANDO™ Side Entry Pit System | Class B 80kN

Composite Cover with Galv Mild Steel Frame | 900mm x 600mm (nominal)

**Place of installation:** Footpaths, pedestrians, light traffic.

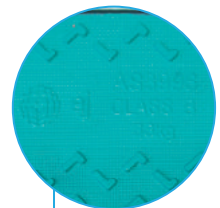


**UV stabilised colour options**

**Colour choices:**  
Select a colour that codes your organisation



**Molded-in 4L anti-slip design**  
for pedestrians



**Molded-in product lettering**



ej

ejco.com



**Americas**

1 800 874 4100

**Europe**

including the Middle East and Africa

33 3 44 08 28 00

**Asia-Pacific**

61 7 3216 5000

**Australia**

**QLD**

9 Delta St,  
Geebung, QLD 4034  
Ph: 07 3216 5000  
Fax: 07 3216 5222

**NSW**

140 Hassall St,  
Wetherill Park, NSW 2164  
Ph: 02 9757 3862  
Fax: 02 9757 3863

**VIC**

1/40 Healey Road,  
Dandenong South, VIC 3175  
Ph: 03 9792 5144  
Fax: 03 9792 5177

**WA**

18 Boulder Road,  
Malaga, WA 6090  
Ph: 08 9209 2930  
Fax: 08 9209 2077

Registered Marks

HEELPROOF®  
ELECTROFLO™  
STORMTROOPER™  
COMMANDO™  
NORINCO®  
TELECOM™  
SELFLEVEL™  
ERMATIC®

**COMMANDO™**  
Asia-Pacific 2016



CHILDSAFETY®  
NORGUSS™  
CABLECOM®  
NORLONG™  
MAXIMO™  
AQUERA™



Quality  
ISO 9001



OceanaMark  
AS3996  
Certification