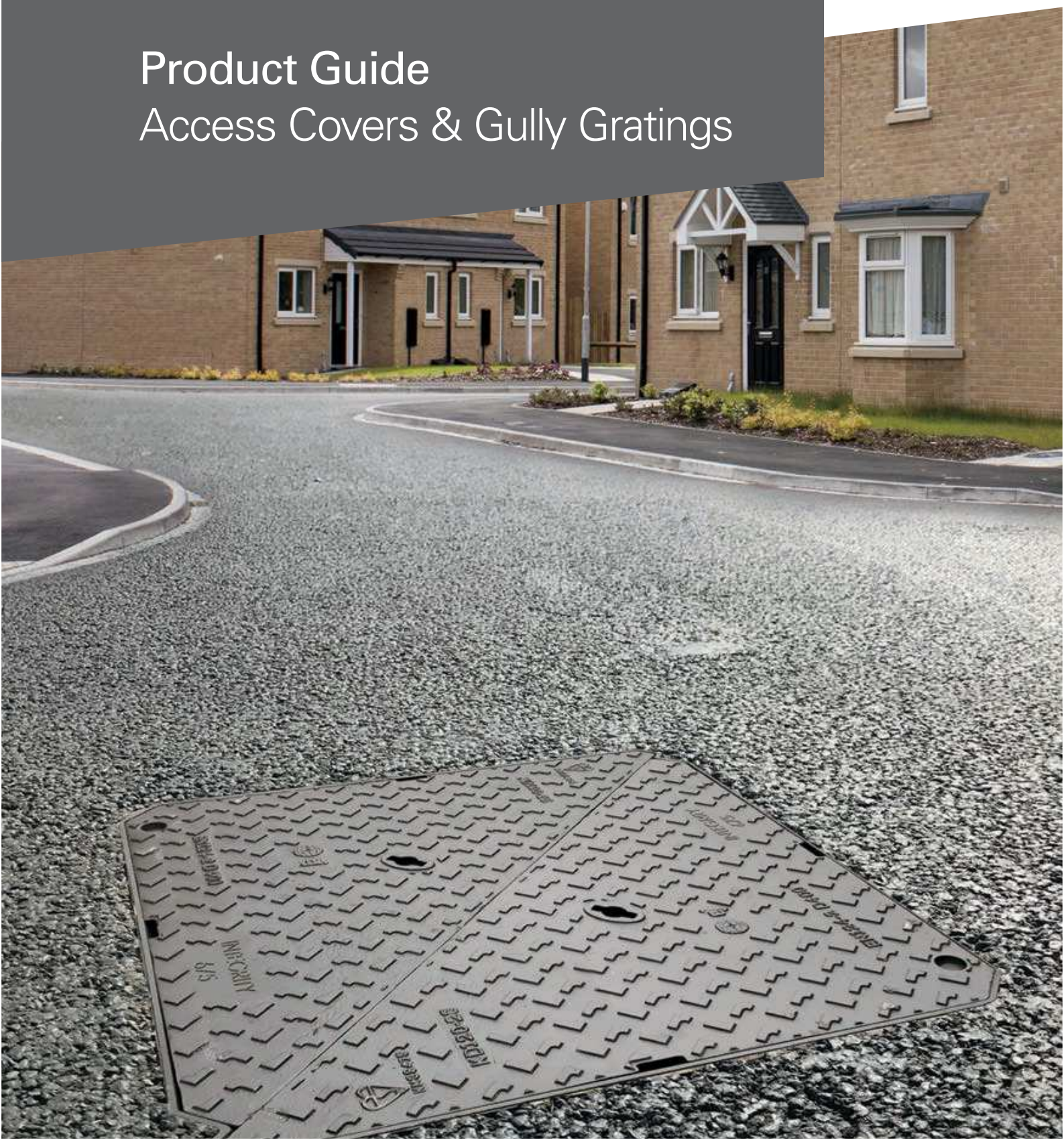




ej

# Product Guide

## Access Covers & Gully Gratings



## Peter Savage is now EJ

Over our 45 year history Peter Savage Ltd has grown to become one of the leading manufacturers and suppliers of access covers and drainage gratings in the UK, offering the UK's Largest Range.

In 2015 Peter Savage Ltd was purchased by EJ. As part of EJ, Peter Savage Ltd joined a global enterprise with a presence on five continents including sales and distribution offices, best-in-class manufacturing facilities and R&D centres.

In July 2017 Peter Savage Ltd became EJ.

The EJ legacy dates back to 1883 when William E. Malpass and his father-in-law Richard W. Round established a foundry on the shores of Lake Charlevoix, in the town of East Jordan, Michigan, USA.

137 years later, EJ is still a family owned business with safety and environmental considerations at the core of the manufacturing process. Our commitment to you is that we will continue to create innovative customer-orientated solutions that improve people's lives. We will do that in ways that are smarter, greener and safer than ever before.

We will still be offering the unrivalled UK's largest range that you have become accustomed to, however this now includes a global product range all designed to ensure you select the correct product for your application.

We look forward to working with you.

# Table of Contents

<b>Manhole Cover Measuring</b>	<b>10</b>
<b>Manhole Cover Seals Explained</b>	<b>10</b>
<b>Iron Loading Classifications</b>	<b>11</b>
<b>Steel Loading Classifications</b>	<b>12</b>
<b>Steel Products Identification</b>	<b>13</b>

Product	Description	Page
<b>Steel Products</b>		
	Pressed Steel Solid Top - Single Seal	16
	Pressed Steel Solid Top - Double Seal & Locked	17
	Chequer Plate Solid Top	18
	Internal Recessed Cover	19
	External Recessed Cover	20
	Heavy Duty External Recessed Cover	21
<b>ALUMATIC®</b>	ALUMATIC® Recessed	23
<b>Aluminium Recessed</b>	ALUMATIC® Lite Recessed	24
	ALUMATIC® Lite Vinyl	25
<b>Iron Products</b>		
	D 400 INTEGRITY™ Access Covers	28
	D 400 ULTRA™ Access Covers	29
	HA2 BRUNEL	30
	C 250 & B 125 Access Covers	31
	A 15 & Surface Boxes	32
	PPIC Access Covers	33
	D 400 Gully Gratings	34
	C 250 Yard/Gully Gratings	35
	Optional Extras	36-37
	V-MAX™ 1:5 Profiled Gratings	38
	ERMATIC® Modular Access Solutions	39
	AXIS™ Hinged Access Covers	40
<b>Linear Channel Drainage</b>		
	Domestic Linear Drainage	44
	Industrial Linear Drainage	46
	Industrial Linear Drainage Features	47
<b>Access Chamber Solutions</b>		
	NEXUST™ Structural	50
	NEXUST™ Structural Multiple Opportunities	51
	DATUM™ Non Structural	52
	Composite Covers	53
	SWITCH™ Pole Retention System	54







# For over 137 years, we have fostered strong relationships around the world.

## Ingenuity and craft

With ingenuity and craft, we have shaped molten iron into products that serve as the infrastructure of neighbourhoods, villages and cities.

## Integrity and heart

With integrity and heart, we have responded to our customers' needs and expectations and built names for ourselves.

Our family heritage and legacy have been the cornerstone of our journey and our inspiration to grow.





**ej**

**Shared commitment.  
Common bond.**

We've been on parallel paths: committed to creating the best infrastructure access solutions for our customers and backing them with unparalleled customer care. This commitment is our common bond. It melts distance, cultures and language. It's what strengthens us as a company under our name EJ.

Together, we are the world leader in the design, manufacture and distribution of access covers and gratings for water, sewer, drainage, telecommunications and utility networks.

**Global expertise.  
Local understanding.**

As a worldwide company, we excel at serving our customers by leveraging our global and local strengths. To ensure every customer benefits from our global learning, we collaborate across departments. From Design to Manufacture, Research to Customer Care-from North America to France, Australia to UK: we share facts, data and developments across all disciplines.

This expertise includes the intelligence we gain through in-house research, on-road testing, and through participation in Standards committees around the world. Our research and collaboration give us the edge in creating the best infrastructure solutions available: solutions that lead the industry, act as best-in-class benchmarks, and satisfy the most demanding customer expectation.

Our distribution network, manufacturing facilities, and highly developed understanding of local cultures and standards puts us in a perfect place to back our solutions with knowledgeable and responsive customer service. Our modern, regional production capabilities put inventories within quick reach of our customers. The result: Our customers have unrivalled access to innovations, inventories and service in the field.

**Our people:  
Our core strength.**

Along with our distributors and agents, we take pride in what we do. We are honest and genuinely committed to creating and maintaining real, long-lasting relationships. We work where you work, we live where you live. We hire the right people, and give them superior knowledge. It is our employees' world class knowledge and expertise that continues to keep us leading in our globally competitive industry.

We are fortunate to have a long history of attracting and retaining outstanding people. Our workforce is diverse, knowledgeable and loyal, and often includes multiple generations from the same family. Our passionate and dedicated teams repeatedly earn recognition for their high degree of professionalism.





We are now a global enterprise that spans 5 continents promoting innovation, quality and a commitment to customer service.



Our EMEA iron foundry is located in **Picardie**, France. With a 100,000 tonnes capacity, 42 hectares (over 100 acres). We are ISO 9001, ISO 14001, ISO 50001 and OHSAS 18001 certified for: quality, management, environment and health and safety.



Our UK head office is located in **Nuneaton**. The primary UK operation is run from here and the site includes a fabricated steel facility and 3 acres of yard storage. Management system certification includes ISO 9001 for quality.



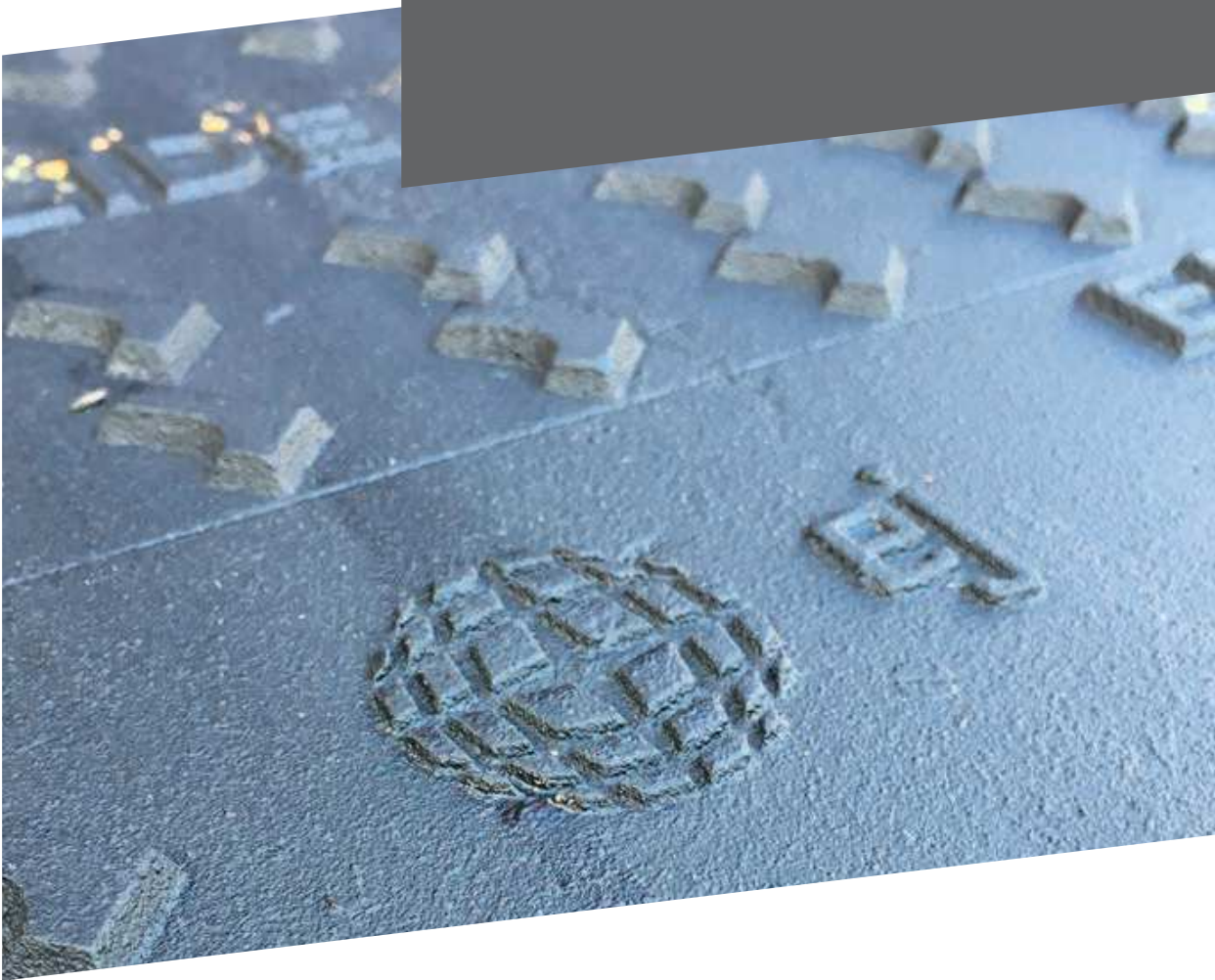
Located in **Ardennes**, France, we have another fabrication facility containing the most advanced technology in Europe such as plasma cutting & robotic welding, and provides high volume capacity as well as tailor-made solutions to the marketplace. Management system certification includes ISO 9001, ISO 14001, and OHSAS 18001 for quality, environment, health and safety.







# The Basics



## Product Guide

# Manhole Cover Sizing Explained

All covers & frames are manufactured to clear opening sizes, put simply this is the size of the hole which the cover and frame is to span. The clear opening size of the cover is the inside frame dimension and consequently the cover & frame will then rest on the surrounding chamber.

It is vitally important to establish the clear opening of the chamber, as a cover which is too small will have an unsupported frame and will fail. A cover which is too large in some instances may be acceptable, however if the cover has underbracing to the lid (often the case on larger, heavier units) this may clash with the chamber and will not fit correctly.



## Product Guide

# Manhole Cover Seals Explained

Covers and frames are available unsealed, single sealed and double sealed. D 400 iron covers & frames are unsealed as they are double triangular and each lid only sits on the frame in three places. Slide-out products are also unsealed.

Most access covers are single seal as standard. A single seal cover can help prevent the egress of odours and ingress of water when the sealing groove is filled with grease. There are a small amount of covers that are available single rubber sealed, these usually feature a single 'O' ring seal. Double seal covers feature two rubber seals, the two rubber seals prevents odours escaping from the chamber when not under pressure.



Single Seal

Double Seal

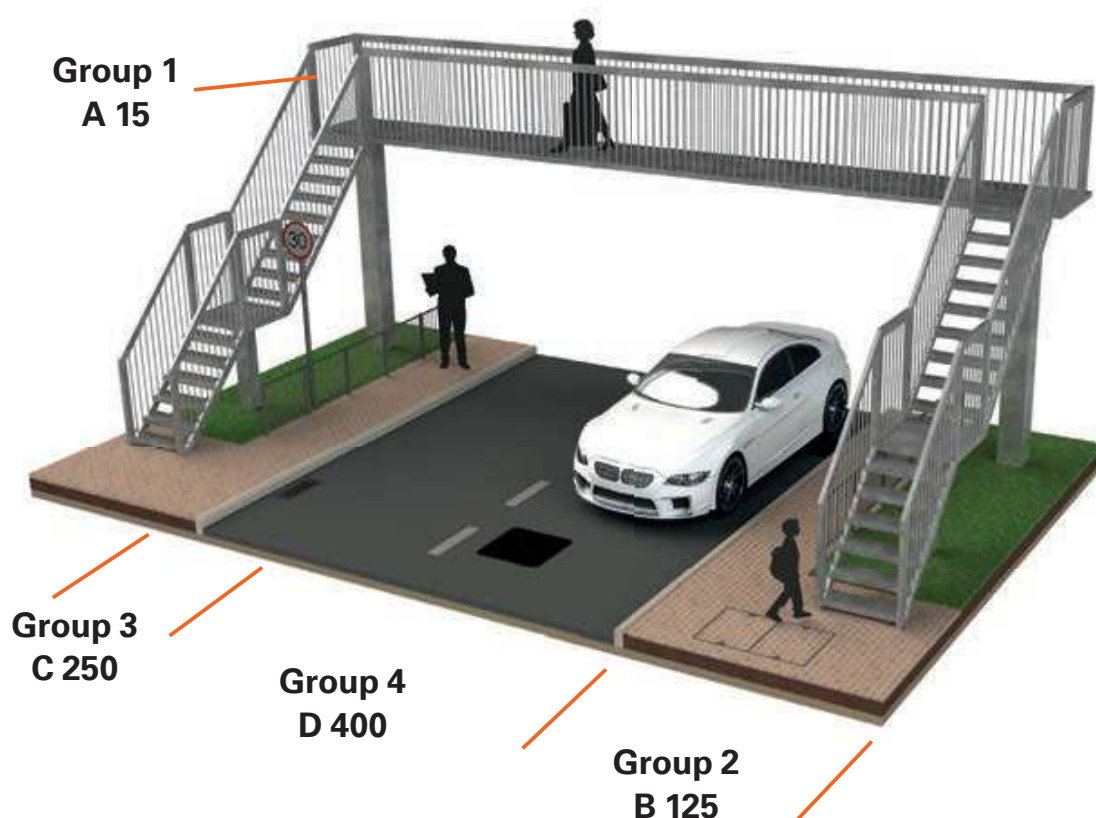
Slide-out



## Product Guide

# Iron Products Loading Classifications

BS EN 124 is a performance standard which states the design and load performance of access covers and gully gratings to suit predefined types of applications. Products designed to BS EN 124 are grouped and classified depending on their place of installation, from pedestrian applications to airport applications.



Loadings	EN 124 Class	Area of Installation	BS EN 124 Test Load
<b>Group 1</b>	A 15	For use in pedestrian areas where vehicles have no access.	15 kN
<b>Group 2</b>	B 125	For use in car parks & pedestrian areas where infrequent vehicle access is likely.	125 kN
<b>Group 3</b>	C 250	For access covers & gully gratings in areas where slow moving heavy traffic have access and for gully gratings in carriageway not exceeding 500 mm from the kerbside & 200 mm into the verge/path.	250 kN
<b>Group 4</b>	D 400	For use in carriageways of roads, hard shoulders and parking areas.	400 kN
<b>Group 5</b>	E 600	For use in areas where high wheel loads are present.	600 kN
<b>Group 6</b>	F 900	For use in areas where extremely high wheel loads are present.	900 kN

# Product Guide

## Steel Products Loading Classifications

Steel products within this brochure fall into two different classifications, Domestic & FACTA loadings.

The domestic load classification state the gross laden vehicle weight (total vehicle weight) of vehicles which are likely to travel over them i.e. 5 tonne gross laden vehicle. This is where the abbreviation GLVW is derived. Domestic products are designed only for Pedestrian to Frequent use Domestic applications.

Products manufactured to FACTA load classifications have been designed to an industry standard load specification from Pedestrian applications to applications where slow moving lorries have access.

Please also note: steel covers and frames are only designed for slow moving traffic applications\* not main roads - for main roads, heavy duty D400 ductile iron covers are required.

Pedestrian



5 Tonne



Class AA



Class AAA



10 Tonne



17 Tonne



25 Tonne



Class B



Class C



Class D



Domestic Loading (GLVW)	Domestic Application
Pedestrian	Pedestrian Only
5 Tonne	Garden/Landscaped Area
10 Tonne	Infrequent Use Domestic Application
17 Tonne	Moderate Use Domestic Application
25 Tonne	Frequent Use Domestic Application

FACTA Class	Wheel Load (Slow Moving Pneumatic)	Wheel Load (Slow Moving Solid)	Area of Installation
AA	1.5 tonne	N/A	Pedestrian Only
AAA	2.5 tonne	0.5 tonne	Occasional Slow Moving Cars
B	5.0 tonne	0.75 tonne	Slow Moving Cars
C	6.5 tonne	1.0 tonne	Slow Moving Heavy Vehicles
D	11 tonne	3.0 tonne	Slow Moving Lorries

\* Slow moving wheel loads are deemed to be speeds no greater than 20 mph, in low intensity trafficked areas. Where higher intensity traffic is expected, a higher load classification of cover is recommended



# Product Guide

## Steel Products Identification

All steel products are labelled to help with identification. The label features the size, product code, loading and also barcode for easy identification.

Certain steel products feature a coloured label to indicate the load classification of the product.



**White = 2.5 tonne GLVW loading**



**Yellow = 5 tonne GLVW loading**



**Blue = 10 tonne GLVW loading**



**Green = 17 tonne GLVW loading**



**Red = 25 tonne GLVW loading**





# Steel Products



## PRESSED STEEL

### Domestic Solid Top



50CGP



51DG

### Single Seal

Standard Sizes

EJ Code	Clear Opening (mm)	Frame Depth (mm)	Description	Loading (GLVW)
50BG	450 x 450	25	Galvanised Steel Cover & Frame	Pedestrian
51BG	450 x 450	25	Galvanised Steel Cover & Frame	5 Tonne
52BG	450 x 450	25	Galvanised Steel Cover & Frame	10 Tonne
50CG	600 x 450	25	Galvanised Steel Cover & Frame	Pedestrian
50CGP	600 x 450	30	Galvanised Steel Cover & Polyprop Frame	Pedestrian
51CG	600 x 450	25	Galvanised Steel Cover & Frame	5 Tonne
51CGP	600 x 450	30	Galvanised Steel Cover & Polyprop Frame	5 Tonne
52CG	600 x 450	25	Galvanised Steel Cover & Frame	10 Tonne
52CGP	600 x 450	30	Galvanised Steel Cover & Polyprop Frame	10 Tonne
53CG	600 x 450	25	Galvanised Steel Cover & Frame	17 Tonne
53CGP	600 x 450	30	Galvanised Steel Cover & Polyprop Frame	17 Tonne
55CG	600 x 450	25	Galvanised Steel Cover & Frame	25 Tonne
55CGP	600 x 450	30	Galvanised Steel Cover & Polyprop Frame	25 Tonne
50DG	600 x 600	25	Galvanised Steel Cover & Frame	Pedestrian
51DG	600 x 600	25	Galvanised Steel Cover & Frame	5 Tonne
52DG	600 x 600	25	Galvanised Steel Cover & Frame	10 Tonne
53DG	600 x 600	25	Galvanised Steel Cover & Frame	17 Tonne

## PRESSED STEEL

### Domestic Solid Top



51CGP-LS



DS51DG/4

### Double Seal & Locked

Standard Sizes

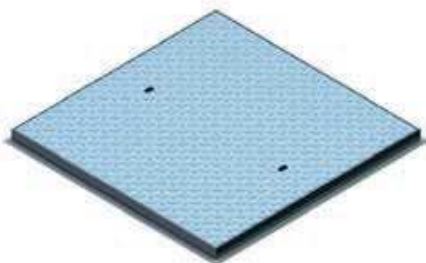
EJ Code	Clear Opening (mm)	Frame Depth (mm)	Description	Loading (GLVW)
50CGP-LS	600 x 450	30	Galvanised Steel Cover & Polyprop Frame, Locked & Sealed	Pedestrian
51CGP-LS	600 x 450	30	Galvanised Steel Cover & Polyprop Frame, Locked & Sealed	5 Tonne
52CGP-LS	600 x 450	30	Galvanised Steel Cover & Polyprop Frame, Locked & Sealed	10 Tonne
DS50DG/4	600 x 600	25	Galvanised Steel Cover & Frame, Locked & Double Steel Seal*	Pedestrian
DS51DG/4	600 x 600	25	Galvanised Steel Cover & Frame, Locked & Double Steel Seal*	5 Tonne
DS52DG/4	600 x 600	25	Galvanised Steel Cover & Frame, Locked & Double Steel Seal*	10 Tonne

\* Double steel seal suitable for grease

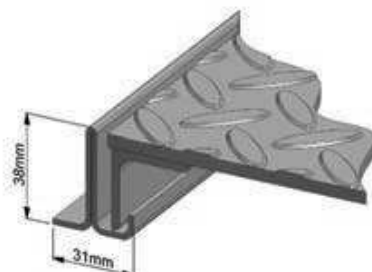


## CHEQUER PLATE

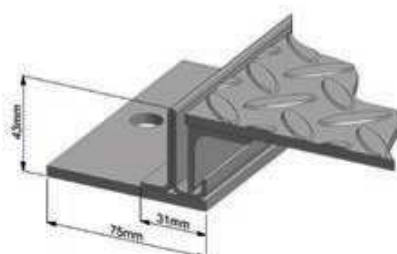
### Solid Top



PS100 AA,AAA,B



Section Through - Class AA, AAA



Section Through - Class B

### PS100

#### Standard Sizes

EJ Code	Clear Opening (mm)	Frame Depth (mm)	Description	Loading (FACTA)
F101EG	750 x 600	38	Galvanised Steel Cover & Frame, ST17506001112311	Class AA
F101EG/4	750 x 600	38	Galvanised Steel Cover & Frame, Locked & Double Seal, ST175060014S2F	Class AA
F102EG	750 x 600	38	Galvanised Steel Cover & Frame, ST17506002112311	Class AAA
F101FG	750 x 750	38	Galvanised Steel Cover & Frame, ST175075011010	Class AA
F101GG	900 x 600	38	Galvanised Steel Cover & Frame, ST19006001112311	Class AA
F101JG	900 x 900	38	Galvanised Steel Cover & Frame, ST19009001112311	Class AA
F102GG	900 x 600	38	Galvanised Steel Cover & Frame, ST19006002112311	Class AAA
F102JG	900 x 900	38	Galvanised Steel Cover & Frame, ST19009002112311	Class AAA
F104CG	600 x 450	43	Galvanised Steel Cover & Frame, ST16004504112311	Class B
F104DG	600 x 600	43	Galvanised Steel Cover & Frame, ST16006004112311	Class B

### FACTA AA, AAA, B

**38mm or 43mm Deep Frame** Chequer plate solid top cover and frame. The product is underbraced where required to meet the stated load. All products are manufactured under an ISO 9001 Quality system. This product is hot dip galvanised to BS EN ISO 1461 as standard.

#### Options:

Double Polyethylene Seal  
 Locking - Stainless Steel Screws  
 Locking - Hex Pin  
 Peephole Inspection Point  
 Engraved Badging e.g. Water, Gas

**Other sizes available upon request, please contact sales for more information**

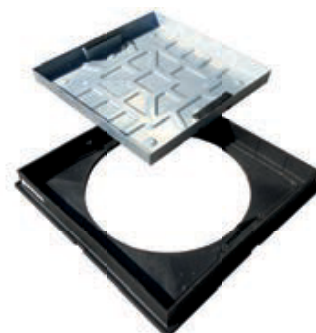
**FACTA Class C & D designs also available.**

**INTERNAL****Concrete Infill Recessed Covers**

3104C-SLK



D3104B



R2-T450P-SLK

**Rubber Seal & Locked**

Standard Sizes

Code	Clear Opening (mm)	Frame Depth (mm)	Description	Loading (GLVW)*
D3104A	300 x 300	58	Galvanised Steel Cover & Frame, Double Rubber Sealed & Locked	10 Tonne
D3104B	450 x 450	58	Galvanised Steel Cover & Frame, Double Rubber Sealed & Locked	10 Tonne
D3104C	600 x 450	58	Galvanised Steel Cover & Frame, Double Rubber Sealed & Locked	10 Tonne
D3104D	600 x 600	58	Galvanised Steel Cover & Frame, Double Rubber Sealed & Locked	10 Tonne
D3104E	750 x 600	58	Galvanised Steel Cover & Frame, Double Rubber Sealed & Locked	10 Tonne
D3104F	750 x 750	58	Galvanised Steel Cover & Frame, Double Rubber Sealed & Locked	10 Tonne
D3104G	900 x 600	58	Galvanised Steel Cover & Frame, Double Rubber Sealed & Locked	10 Tonne
D3104H	900 x 750	58	Galvanised Steel Cover & Frame, Double Rubber Sealed & Locked	10 Tonne
R2-T450	Ø450	58	Galvanised Steel Cover & Frame, SQ to Round, Double Rubber Sealed	10 Tonne
R2-T450P-SLK	Ø450	56	Galvanised Steel Cover & Polyprop Frame, SQ to Round, SLK	10 Tonne
3104B-SLK	450 x 450	56	Galvanised Steel Cover & Polyprop Frame, SLK Lifting Keys	10 Tonne
3104C-SLK	600 x 450	56	Galvanised Steel Cover & Polyprop Frame, SLK Lifting Keys	10 Tonne
3104D-SLK	600 x 600	56	Galvanised Steel Cover & Polyprop Frame, SLK Lifting Keys	10 Tonne

\*Must be infilled with C25 concrete to achieve full loading

**SLK Lifting Keys**

Covers which are infilled with concrete or block paving are notoriously heavy - the SLK heavy duty keys make lid removal considerably safer. The SLK keys have been tested and are capable of taking up to 600kg in force.  
UK Patent GB 2450631

**Brass or Stainless Steel Edging**

Brass or Stainless Steel Decorative edging is available on the D3104A-G.



## EXTERNAL Recessed Covers



DR6045P-SLK



DR4545-80



R2-450P-SLK

### Block/Slab/Paving Infill

Standard Sizes

Code	Clear Opening (mm)	Internal Recess (mm)	Description	Loading (GLVW)
DR3030-80	300 x 300	80	Galvanised Steel Cover & Frame	5 Tonne
DR4545-80	450 x 450	80	Galvanised Steel Cover & Frame	5 Tonne
DR4545	450 x 450	100	Galvanised Steel Cover & Frame	5 Tonne
DR6045	600 x 450	100	Galvanised Steel Cover & Frame	5 Tonne
M6045-100	600 x 450	100	Galvanised Steel Cover & Frame	10 Tonne
DR60P-SLK	600 x 450	65	Galvanised Steel Cover & Polyprop Frame, SLK Keys	5 Tonne
DR6045-SLK	600 x 450	80	Galvanised Steel Cover & Frame, SLK Keys	10 Tonne
DR6045P-SLK	600 x 450	80	Galvanised Steel Cover & Polyprop Frame, SLK Keys	10 Tonne
DR6060-80	600 x 600	80	Galvanised Steel Cover & Frame	5 Tonne
DR6060	600 x 600	100	Galvanised Steel Cover & Frame	5 Tonne
DR6060P-80SLK	600 x 600	80	Galvanised Steel Cover & Polyprop Frame, SLK Keys	5 Tonne
DR6060P-100SLK	600 x 600	100	Galvanised Steel Cover & Polyprop Frame, SLK Keys	5 Tonne
M6060P-100SLK	600 x 600	100	Galvanised Steel Cover & Polyprop Frame, SLK Keys	10 Tonne
M6060-80	600 x 600	80	Galvanised Steel Cover & Frame	10 Tonne

### Square to Round Block/Slab/Paving Infill

Standard Sizes

R2-300	Ø320	80	Galvanised Steel Cover & Steel Frame, SQ to Round	5 Tonne
R2-450P-SLK	Ø450	80	Galvanised Steel Cover & Polyprop Frame, SQ to Round, SLK	10 Tonne

Other sizes available upon request, please contact sales for more information



## HEAVY DUTY EXTERNAL Recessed Covers



PS6000



PS6700

### PS6000

Standard Sizes

Clear Opening (mm)	Suffix
300 x 300	A
450 x 450	B
600 x 450	C
600 x 600	D
750 x 600	E
750 x 750	F
900 x 600	G
900 x 750	H
900 x 900	J

### PS6700

Standard Sizes

Clear Opening (mm)	Suffix
900 x 600	G
900 x 750	H
900 x 900	J
1000 x 1000	K
1200 x 600	L
1200 x 750	M
1200 x 900	N
1500 x 600	P
1500 x 750	Q

### PS6000/PS6700

Single/Twin recessed block pavior infill cover and frame. Recessed lids are designed to enable either a block or slab infill. The lids are underbraced where necessary to meet the stated FACTA load rating. All products are manufactured under an ISO 9001 Quality system. This product is hot dip galvanised to BS EN ISO 1461 as standard.

#### Product Loading Codes

**Class AA** = PS6001  
**Class AAA** = PS6002  
**Class B** = PS6004  
**Class C** = PS6005  
**Class D** = PS6006

#### Product Loading Codes

**Class AA** = PS6701  
**Class AAA** = PS6702  
**Class B** = PS6704  
**Class C** = PS6705  
**Class D** = PS6706

#### Options

Stainless Steel Edging  
 Locking  
 Unsealed  
 Single Polyethylene Seal  
 Double Polyethylene Seal  
 Badged i.e. Water, Gas

Internal Depth Options

Block Size	Internal Recess	Frame Depth	Code
up to 50 mm	70 mm	83 mm	7
up to 65 mm	90 mm	103 mm	9
up to 80 mm	100 mm	113 mm	1
up to 100 mm	130 mm	143 mm	3

#### Specification/Ordering:

Please choose the product load code, size and lid recess suffix, and any extras i.e. PS6004D7

# ALUMATIC®

## Recessed & Solid Top



ALUMATIC®  
Single Recessed  
FACTA Class B - 5T (SMWL)



Triple sealed recessed access cover suitable for a high-quality floor finish up to a depth of 50 mm of tile, carpet, blocks or terrazzo infill. Aluminium or brass edging strips are 8 mm deep, which allows edges to be ground and polished in-situ up to 6 mm.

Covers are designed to be infilled with C40 concrete to achieve full loading. The Alumatic® features M10/M12 Lock & Lift devices. The Alumatic® also boasts triple sealing facilities comprising of a primary and a secondary seal to protect against the ingress of dirt and fluids, alongside an inner grease seal to prevent the ingress/egress of gas, air and water. All products are manufactured under an ISO 9001 Quality system. This product is manufactured from Aluminium alloy 6063 and 6082 for low corrosion and superior finish.

Single units are gas, air and watertight at normal atmospheric pressure.

The ALUMATIC® range has a number of unique features designed to improve appearance and performance:

- Features:**

  - 8 mm deep architectural edgings
  - Lock & Lift as standard
  - Stainless steel locking bolts
  - Triple sealed (including grease seal)
  - High resistance to corrosion
  - Accommodates up to 50 mm infill
- Options:**

  - Aluminium Edging
  - Brass Edging
  - 2 Hours Fire Integrity Rated

Standard Sizes

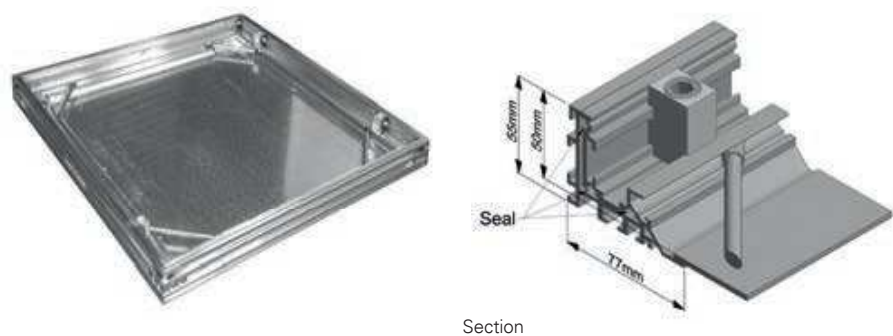
Code	Clear Opening (mm)	O/all Frame (mm)	Frame Depth (mm)	No of Covers
AL43030	300 x 300	428 x 428	76	Single
AL44545	450 x 450	578 x 578	76	Single
AL46045	600 x 450	728 x 578	76	Single
AL46060	600 x 600	728 x 728	76	Single
AL47560	750 x 600	878 x 728	76	Single
AL47575	750 x 750	878 x 878	76	Single
AL49075	900 x 750	1028 x 878	76	Single

Non-standard sizes available. Twin, duct, multiple configurations available.





ALUMATIC® LITE  
Recessed  
FACTA Class AA - 1.5T (SMWL)



Triple sealed recessed access cover suitable for up to 18 mm tile/floor finish infill. Covers are designed to be infilled with C40 concrete to achieve full loading. The Alumatic® Lite features M10/M12 Lock & Lift devices. The Lite also boasts triple sealing facilities comprising of a primary dirt seal to protect against the ingress of dirt, alongside secondary and tertiary EPE inner seals to prevent the ingress/egress of gas, air and water. All products are manufactured under an ISO 9001 Quality system. This product is manufactured from Aluminium alloy 6063 and 6082 for low corrosion and superior finish.

Duct runs and beamed multiple configurations are available. Single units are gas, air and watertight at normal atmospheric pressure. Twin units feature a removable support beam and are watertight at normal atmospheric pressure.

Features:

- Lock & Lift as standard
- Stainless steel locking bolts
- Triple sealed
- High resistance to corrosion
- Accommodates up to 18 mm infill

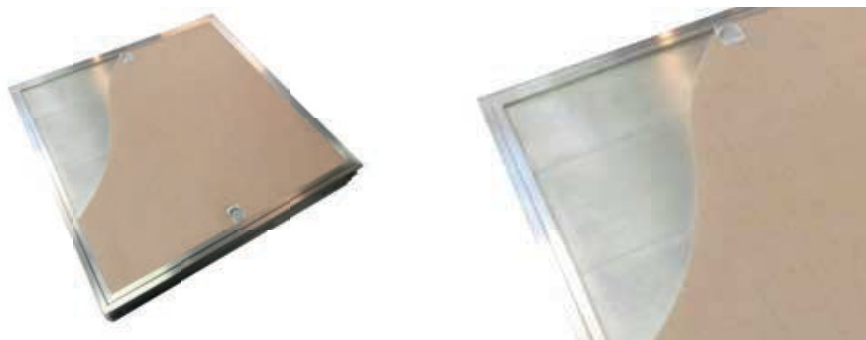
Options:

- Aluminium Edging
- Brass Edging

Standard Sizes

Code	Clear Opening (mm)	O/all Frame (mm)	Frame Depth (mm)	No of Covers
AL23030	300 x 300	410 x 410	55	Single
AL24545	450 x 450	560 x 560	55	Single
AL26045	600 x 450	710 x 560	55	Single
AL26060	600 x 600	710 x 710	55	Single
AL27560	750 x 600	860 x 710	55	Single
AL27575	750 x 750	860 x 860	55	Single
AL29075	900 x 750	1010 x 860	55	Single
AL29090	900 x 900	1010 x 1010	55	Twin
AL210060	1000 x 600	1010 x 710	55	Twin
AL210075	1000 x 750	1010 x 860	55	Twin
AL212060	1200 x 600	1310 x 710	55	Twin

Non-standard sizes available

**ALUMATIC® LITE****Vinyl****FACTA Class A - 0.6T (SMWL)**

Triple sealed recessed access cover suitable for up to 3 mm vinyl finish infill. Covers are infilled with aluminium planking to leave a 3 mm recess. The Alumatic® Lite features M10/M12 Lock & Lift devices. The Lite also boasts triple sealing facilities comprising of a primary dirt seal to protect against the ingress of dirt, alongside secondary and tertiary EPE inner seals to prevent the ingress/ egress of gas, air and water. All products are manufactured under an ISO 9001 Quality system. This product is manufactured from Aluminium alloy 6063 and 6082 for low corrosion and superior finish.

Single units are gas, air and watertight at normal atmospheric pressure. Twin units feature a removable support beam and are watertight at normal atmospheric pressure.

**Features:**

- Lock & Lift as standard
- Stainless steel locking bolts
- Triple sealed
- High resistance to corrosion
- Accommodates up to 18 mm infill

**Options:**

- Aluminium Edging
- Brass Edging

## Standard Sizes

Code	Clear Opening (mm)	O/all Frame (mm)	Frame Depth (mm)	No of Covers
ALV3030	300 x 300	410 x 410	55	Single
ALV4545	450 x 450	560 x 560	55	Single
ALV6045	600 x 450	710 x 560	55	Single
ALV6060	600 x 600	710 x 710	55	Single
ALV7560	750 x 600	860 x 710	55	Single
ALV7575	750 x 750	860 x 860	55	Single
ALV9075	900 x 750	1010 x 860	55	Single
ALV9090	900 x 900	1010 x 1010	55	Twin

Non-standard sizes available







Iron Products



D 400  
Access Covers  
INTEGRITY™ Specification



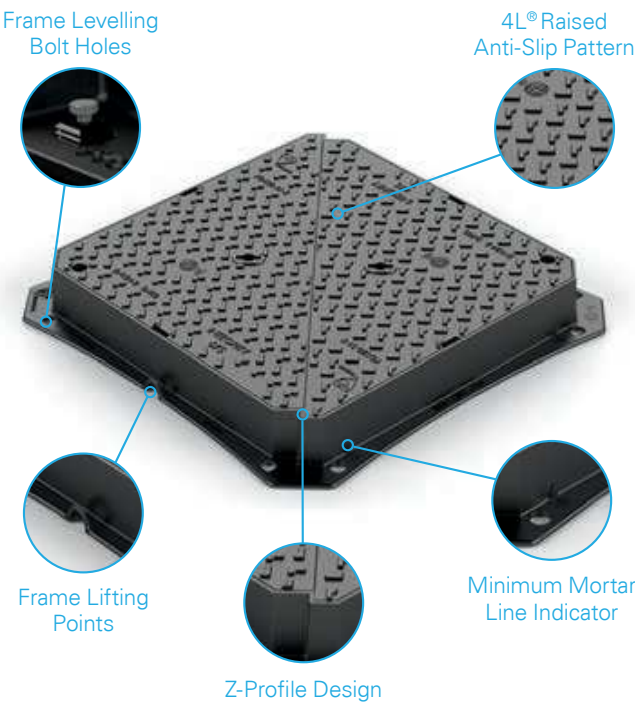
EN 124 D 400 INTEGRITY™ - Low Intensity

Standard Sizes

EJ Code	Clear Opening (mm)	O/all Frame (mm)	Frame Depth (mm)	Weight (kg)	D/Tri Lids
KD800	450 x 450	580 x 580	100	48	1
KD900	600 x 450	750 x 600	100	59	1
KD100	600 x 600	720 x 720	100	61	1
KD100-6	600 x 600	720 x 720	150	70	1
KD120	675 x 675	795 x 795	100	76	1
KD120-6	675 x 675	795 x 795	150	88	1
D1212*	1200 x 1200	1350 x 1350	150	415	2

\*Does not conform to EN 124 due to size.

Other sizes available upon request, please contact sales for more information



**D 400****Access Covers****ULTRA™ Specification**

KD12-6



KD19



PYTHON 100

**EN 124 D 400 ULTRA™ CD534 Specification - High Intensity**

## Standard Sizes

EJ Code	Clear Opening (mm)	O/all Frame (mm)	Frame Depth (mm)	Weight (kg)	D/Tri Lids
KD10	600 x 600	752 x 752	100	77	1
KD10-6	600 x 600	752 x 752	150	82	1
KD10CHU	Ø600	Ø830	100	59	-
KD12	675 x 675	827 x 827	100	84	1
KD12-6	675 x 675	827 x 827	150	98	1
KD14*	750 x 600	900 x 750	100	95	1
KD15*	750 x 750	900 x 900	100	105	1
KD16*	900 x 600	1050 x 750	100	115	1
KD17*	900 x 900	1050 x 1050	100	190	1
KD19	1220 x 675	1370 x 825	100	160	2
KD19-6	1220 x 675	1370 x 825	150	170	2
PYTHON 100	600 x 600	750 x 750	100	74	1
PYTHON 150	600 x 600	750 x 750	150	77	1
WATT 100	675 x 675	830 x 830	100	92	1
WATT 150	675 x 675	840 x 840	150	103	1
SINCLAIR	750 x 600	910 x 760	100	113	1
HUDSON 100	1220 x 675	1365 x 830	100	213	2
HUDSON 150	1220 x 675	1365 x 830	150	220	2

\*150mm Frame Depth options also available

**Other sizes available upon request, please contact sales for more information**



HA2 BRUNEL  
D 400 Access Covers



BRUNEL 600



BRUNEL 675



BRUNEL 675

EN 124:2015 D 400, CD534 - High Intensity

Standard Sizes

EJ Code	Clear Opening (mm)	O/all Frame (mm)	Frame Depth (mm)	Weight (kg)	D/Tri Lids
BRUNEL 600 SL1	600 x 600	786 x 786	100	77	1
BRUNEL 600 HL1	600 x 600	786 x 786	150	87	1
BRUNEL 675 SL1	675 x 675	855 x 855	100	96	1
BRUNEL 675 HL1	675 x 675	855 x 855	150	108	1

**HA2 BRUNEL** is a new range of Highway access covers and frames. The HA2 BRUNEL range has been designed to BS EN 124-2:2015, CD534 and BS 7903. The covers have undergone 3 months of road trialling in which they were subjected to 3000 vehicles a day at an average speed of 80 Kmh. The BRUNEL range of covers are manufactured in our EMEA foundry which is ISO 9001, ISO 14001, ISO 50001 and OHSAS 18001 certified for quality, management, environment and health & safety.

Features:

- HA CD534 Fully Compliant including High Risk Sites.
- BSI Kitemarked.
- EN 124-2:2015 Load Class D 400.
- Anti-slip minimum PSRV of 78
- Innovative Frame Levelling System.
- Minimum Mortar Line Indicator.
- Patented '4L' Raised Pattern
- AMP™ patented anti-movement technology frames.
- Unique V-Seating to increase bearing area and limit lateral movement.
- Anti-Dislodge Keyways for safe operation.

Locking Options:

- L1 - Retro Drill & Tap Frame
- L2 - Retro Drill & Cage Nut
- L3 - Locked CHC Screw & Cage Nut



V-Seating



Cover Locking Point



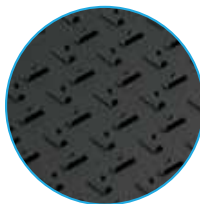
Minimum Mortar Line Indicator



Locked CHC & Cage Nut



Frame Levelling System



Patented '4L' Raised Pattern - Min PSRV 78

## C 250 & B 125 Access Covers



KD61C



KD30



KD3340S

### EN 124 C 250

Standard Sizes

EJ Code	Clear Opening (mm)	O/all Frame (mm)	Frame Depth (mm)	Weight (kg)
KD31C	Ø450	Ø550	58	32
KD60C	450 x 450	540 x 540	75	45
KD61C	600 x 450	700 x 550	75	55
KD62C	600 x 600	700 x 700	75	66
KD65C	900 x 600	1000 x 700	75	114

### EN 124 B 125 Single Seal

Standard Sizes

KD300	305 x 305	385 x 385	47	11
KD30	Ø433	510 x 510	25	30
KD31	Ø450	Ø555	22	32
KD3340	600 x 450	692 x 542	44	55
KD3440	600 x 600	690 x 690	40	66
KD34C-60	Ø600	750 x 750	75	79
KD39	900 x 900	1000 x 1000	60	114

### EN 124 B 125 Slide-out

Standard Sizes

KD3240S	450 x 450	540 x 540	40	23
KD3340S	600 x 450	692 x 542	40	28
KD3440S	600 x 600	690 x 690	40	34
KD3475S	600 x 600	690 x 690	75	40
KD3540S	750 x 600	840 x 690	40	53
KD3740S	900 x 600	990 x 690	40	59
KD3840S	1220 x 675	1320 x 775	40	102

Other sizes available upon request, please contact sales for more information



## A15 & SURFACE BOXES

### Access Covers



E10B1



B2D



KFH125

### EN 124 A 15

Standard Sizes

EJ Code	Clear Opening (mm)	O/all Frame (mm)	Frame Depth (mm)	Weight (kg)
E10A1	450 x 450	520 x 520	26	25
E10B1	600 x 450	672 x 530	26	22
E10C1	600 x 600	675 x 674	25	32

### Surface Boxes & Fire Hydrants

Standard Sizes

EJ Code	Clear Opening (mm)	O/all Frame (mm)	Frame Depth (mm)	Weight (kg)	Loading	BS 5834	Type
KB2D	150 x 150	230 x 230	100	9	Grade A	Part 2	Double triangular
KB3D	229 x 229	310 x 310	100	19	Grade A	Part 2	Double triangular
KB4D	300 x 300	385 x 385	100	26	Grade A	Part 2	Double triangular
TypeA	140 x 115	152 x 152	75	4	Ped	-	Hinged solid top
TypeA-P*	152 x 120	170 x 155	75	1	Ped	-	Hinged solid top
KFH125	380 x 230	500 x 350	125	20	Grade A	Part 3	Solid Top Fire Hydrant
KFH2	430 x 280	535 x 385	105	28	Grade A	Part 3	Solid Top Fire Hydrant

\*Polypropylene

Other sizes available upon request, please contact sales for more information



PPIC & ACCESSORIES

Access Covers



35 kN Polypropylene Covers & Frames

Standard Sizes

EJ Code	Clear Opening (mm)	O/all Frame (mm)	Frame Depth (mm)	Weight (kg)	Features
D30B	Ø300	410 x 410	30	4	Locking
D45B	Ø442	562 x 562	85	7	Locking
E10APL	Ø450	Ø550	30	5	Single Seal, Locking
CM-450C	Ø450	Ø550	30	2	Single Seal, Recessed

A 15 Cast Iron Cover & Plastic Frame

Standard Sizes

E10ACP	Ø450	Ø551	43	12	Single Seal
--------	------	------	----	----	-------------

Step Irons

Standard Sizes

EJ Code	Description
PE-STEPB	380 mm wide double width step iron - plastic encapsulated (building into brickwork)
PE-STEP C	380 mm wide double width step iron - plastic encapsulated (retro fixing into concrete)

Keys

Standard Sizes

EJ Code	Description
H-KEY	Heavy duty keys (per pair)
L-KEY	Light duty keys (per pair)
Q-KEY	Recessed covers lifting keys (per pair)



**D 400****Gully Gratings**

KD500



KD500P



KD50DNN

**EN 124 D 400 INTEGRITY™ - Low Intensity**

Standard Sizes

EJ Code	Over Grate (mm)	O/all Frame (mm)	Frame Depth (mm)	HA102	Waterway (cm²)	Gully	Type
KD50DP	420 x 420	570 x 505	100	-	915	450	Pedestrian, Hinged
KD500*	430 x 370	580 x 483	100	-	1037	450	Hinged
KD500-6*	430 x 370	580 x 483	150	-	1037	450	Hinged
KD500P	430 x 370	580 x 483	100	-	864	450	Pedestrian, Hinged
KD500P-6	430 x 370	580 x 483	150	-	864	450	Pedestrian, Hinged
KD51D	380 x 310	480 x 370	100	-	876	375	Hinged
KD52D*	495 x 345	645 x 440	100	-	1140	450	Hinged
KD410*	400 x 440	550 x 525	100	R	1138	450	Double Tri

\*CD543 Compliant

**EN 124 D 400 ULTRA™ CD534- Specification - High Intensity**

Standard Sizes

BUFFALO	375 x 430	530 x 525	100	-	1140	450	Hinged
KD50DNN	400 x 440	550 x 525	100	R	1200	450	Hinged
KD50D6N	400 x 440	550 x 525	150	R	1200	450	Hinged
KD53D	450 x 450	580 x 525	100	R	1425	450	Hinged
KD41DNN	400 x 440	550 x 525	100	R	1132	450	Double Tri
KD54D	600 x 450	750 x 550	100	Q	1815	450	Hinged
KD41DNN	400 x 440	550 x 525	100	R	1132	450	Double Tri, 3 Flange
KD43DN	600 x 600	752 x 752	100	P	2363	600	Double Tri, 4 Flange

Other sizes available upon request, please contact sales for more information

**C 250****Gully/Yard Gratings**

KD51C2L



KD71



KD72C

**EN 124 Gully Gratings**

Standard Sizes

EJ Code	Over Grate (mm)	O/all Frame (mm)	Frame Depth (mm)	HA102	Waterway (cm <sup>2</sup> )	Gully	Type
KD51C2L	360 x 310	460 x 368	75	-	809	375	Hinged, Locked
KD51C	380 x 310	480 x 370	75	S	890	375	Hinged
KD51CP	380 x 310	480 x 370	75	T	619	375	Pedestrian, Hinged
KD50CN	420 x 420	520 x 480	75	R	1229	450	Hinged

**EN 124 Yard Gratings**

Standard Sizes

EJ Code	Over Grate (mm)	O/all Frame (mm)	Frame Depth (mm)	HA102	Waterway (cm <sup>2</sup> )	Gully	Type
KD70	225 x 225	285 x 263	50	-	237	228	Yard, Flat, Rear Hinged
KD71	225 x 225	285 x 263	50	-	215	228	Yard, Dished, Rear Hinged
KD72C	325 x 325	385 x 365	75	T	530	304	Yard, Flat, Rear Hinged
KD73C	325 x 325	385 x 365	75	-	495	304	Yard, Dished, Rear Hinged

**Other sizes available upon request, please contact sales for more information**



# Optional Extras

## Sealing & Pressure Plates



### Sealing Plates

Galvanised steel sealing plates fitted to the underside of the frame. The plate is bolted to a subframe and is fitted with a rubber seal. Prevents the ingress of surface water and the egress of odours at normal atmospheric pressure.

### Pressure Plates

Galvanised steel pressure plates fitted to the underside of the frame. The plate is bolted to a subframe using M10 bolts at approximately 100 mm centres and is fitted with a neoprene seal. Designed to withstand 0.5 bar of pressure (5 metre head).

Fitted to 150 mm deep products only.

## Badging

Badging options include 'Embossed' and 'Applied' badges. Badges include: GAS, CATV, FW, SW, FH, AV, SV, STREET LIGHTING, MOTORWAY COMMS etc. Bespoke badging is also available, contact sales for further information.



## Locking

Various stainless steel locking options are available on most of our iron covers and gully gratings. For more information please contact sales.



# Optional Extras

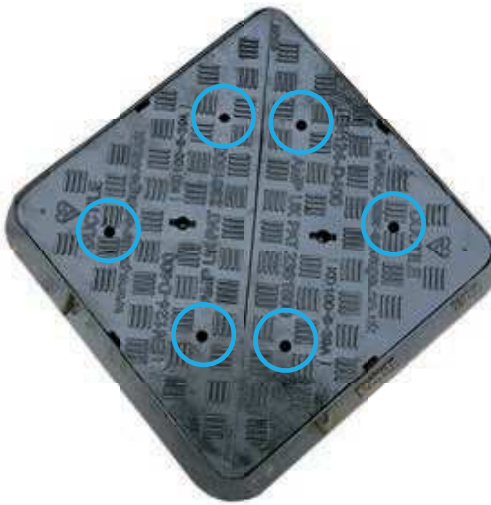
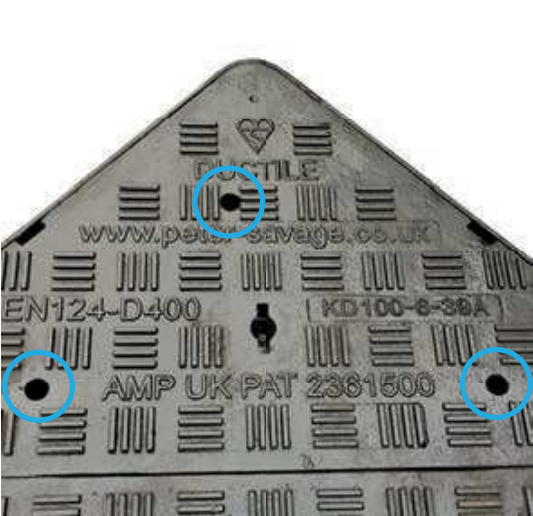
## Safety Grids & Security Plates

Our safety grids & security plates are designed to fit our iron products where applicable. For more information please contact our sales department.



## Air Release Holes

Access covers are drilled with 3 number 19 mm diameter holes per triangular cover





## V-MAX 1:5 Profiled Drainage Gratings



### V-MAX 1:5 Profiled Drainage Gratings

Manufactured to BS EN 124 class D 400 the 1:5 profiled drainage gratings are designed for slip formed drainage channels. The design of the gratings allow for concrete slip forming machines to run over the gratings.



The V-MAX gratings feature fully removable gratings, non-rock wedge seats and AMP™ patented anti-movement technology frames.



For more information on the V-MAX range of gratings [contact sales](#).



# ERMATIC® Modular Access Covers



## ERMATIC® Modular Access Covers

A comprehensive and highly specified range of access covers for a wide variety of underground services. The range consists of standard units made up of one, two or three covers as well as duct runs and beamed multiple units.



Cover types include recessed for concrete infill, recessed for block paving and solid top with anti-slip surface, in all loading classes from B 125 to F 900.



For more information on the ERMATIC® range of gratings [contact sales](#).



## AXIS™ Hinged Access Covers



### AXIS™ Hinged Access Covers

Manufactured to BS EN 124 class D 400 the range of AXIS™ hinged covers comply with HA 104 & BS 7903. The maximum effort of 25Kg/f required to open the covers mean they also meet with HSE recommendations.



The AXIS™ range of hinged covers feature sequenced opening for ease of use and are supplied locked as standard with a single captive bolt.



For more information on the AXIS™ range of hinged covers [contact sales](#).









# Linear Channel Drainage





**DOMESTIC****Linear Channel Drainage**

LIB1



LIB GALV/ LIB PLAS



LIB SLOT DOMESTIC

**EN 1433 Polymer Concrete**

EJ Code	Internal Width (mm)	Invert Depth (mm)	O/all Width (mm)	O/all Depth (mm)	Description
LIB1	100	60	120	78	1000 mm c/w Galvanised Steel Grate
LIB3	-	-	120	288	500 mm Sump c/w Galvanised Steel Grate & basket
LIB4	-	-	120	78	End cap

**EN 1433 Polypropylene**

EJ Code	Internal Width (mm)	Invert Depth (mm)	O/all Width (mm)	O/all Depth (mm)	Description	Waterway (cm <sup>2</sup> per grate)
LIB PLAS	100	65	144	90	1000 mm c/w Polypropylene Grate	299
LIB GALV	100	65	144	90	1000 mm c/w Galvanised Steel Grate	283
LIB CORNER	-	-	157	264	C/w 135 x 135 mm Polyprop Grate	-
LIB SUMP	-	-	157	264	C/w 135 x 135 mm Polyprop Grate inc basket	-
PLAS END	-	-	138	70	Polypropylene End Cap	-

**EN 1433 Polypropylene - Lib Slot Domestic**

LIB SLOT DOM	100	87	120	194	1m slot drain channel, 2 x 0.5m grates
LIB SLOT EC	-	-	115	110	End cap
LIB SLOT EC/110	-	-	117	130	110mm base outlet
LIB SLOT QD	-	-	123	194	Quad connector

**LIB1 Accessories****LIB PLAS/LIB GALV Accessories****LIB SLOT DOMESTIC Accessories**

LIB3



PLAS END



LIB SUMP



LIB SLOT QD



LIB SLOT EC/110



LIB SLOT EC



**INDUSTRIAL****Linear Channel Drainage**

LDC100-6-100



LIBERTY SLOT

**EN 1433 C 250 Loading - 100 mm Internal Width**

Standard Sizes

EJ Code	Length (mm)	Invert Depth (mm)	Description	Waterway (cm <sup>2</sup> per grate)
LDCP100-6-50	1000	72	Polypropylene channel base & edge, Iron grate c/w 6mm slots	282
LDCP100-6-100	1000	122	Polypropylene channel base & edge, Iron grate c/w 6mm slots	282
LDCP100-6-150	1000	172	Polypropylene channel base & edge, Iron grate c/w 6mm slots	282
LDCP100-6-400	500	422	Polypropylene base & edge, Iron grate c/w 6mm slots. Sump	282
LDC100-6-50	1000	72	Polypropylene channel base & steel edge, Iron grate c/w 6mm slots	282
LDC100-6-100	1000	122	Polypropylene channel base & steel edge, Iron grate c/w 6mm slots	282
LDC100-6-150	1000	172	Polypropylene channel base & steel edge, Iron grate c/w 6mm slots	282
LDC100-6-400	500	422	Polypropylene base & steel edge, Iron grate c/w 6mm slots. Sump	282

**EN 1433 D 400 Loading - 100 mm Internal Width**

Standard Sizes

LDD100-6-50	1000	72	Polypropylene channel base & steel edge, Iron grate c/w 6mm slots	235
LDD100-6-100	1000	122	Polypropylene channel base & steel edge, Iron grate c/w 6mm slots	235
LDD100-6-150	1000	172	Polypropylene channel base & steel edge, Iron grate c/w 6mm slots	235
LDD100-6-400	500	422	Polypropylene base & steel edge, Iron grate c/w 6mm slots. Sump	235

**LIBERTY SLOT C 250 Loading**

Standard Sizes

LDLS100-15-100	1000	121	Polypropylene channel base & Galvanised Steel Slot Drain	-
LDLS100-15-500	500	421	Polypropylene channel base & Galvanised Steel Slot Drain Sump	-

Other sizes available upon request, please contact sales for more information



# Features





# LIBERTY DRAIN™ Linear Channel Drainage



## LIBERTY DRAIN™ Linear Channel Drainage

The system provides an economical and effective method for the collection and conveying of surface water. The innovative design and materials utilised enables the installation process to be easier than ever.



The LIBERTY DRAIN™ system is defined by EN 1433 and the range includes C 250, D 400 and F 900 loadings. Available in a variety of widths from 100 mm to 300 mm and depths from 50 mm to 300 mm.



For more information on the LIBERTY DRAIN™ system [contact sales](#).

# Access Chamber Solutions



ACCESS CHAMBERS  
Structural



NEXUS™



NEXUS™

NEXUS™ Structural Chambers

Standard Sizes

EJ Code	Clear Opening (mm)	O/all (mm)	Entry Points
NX3030DE	300 x 300	400 x 400	8
NX3030RP	300 x 300	400 x 400	-
NX4530DE	450 x 300	550 x 400	10
NX4530RP	450 x 300	550 x 400	-
NX4545DE	450 x 450	550 x 550	12
NX4545RP	450 x 450	550 x 550	-
NX6045DE	600 x 450	700 x 550	14
NX6045RP	600 x 450	700 x 550	-
NX6060DE	600 x 600	700 x 700	16
NX6060RP	600 x 600	700 x 700	-

NEXUS™ Features

- Twin Wall
- Vertical 40 Tonne Load Test
- Modular System
- Raisher & Duct Entry
- 64 & 114mm Duct Entry
- Increments of 150mm
- 150mm Deep Sections

NEXUS™ Benefits

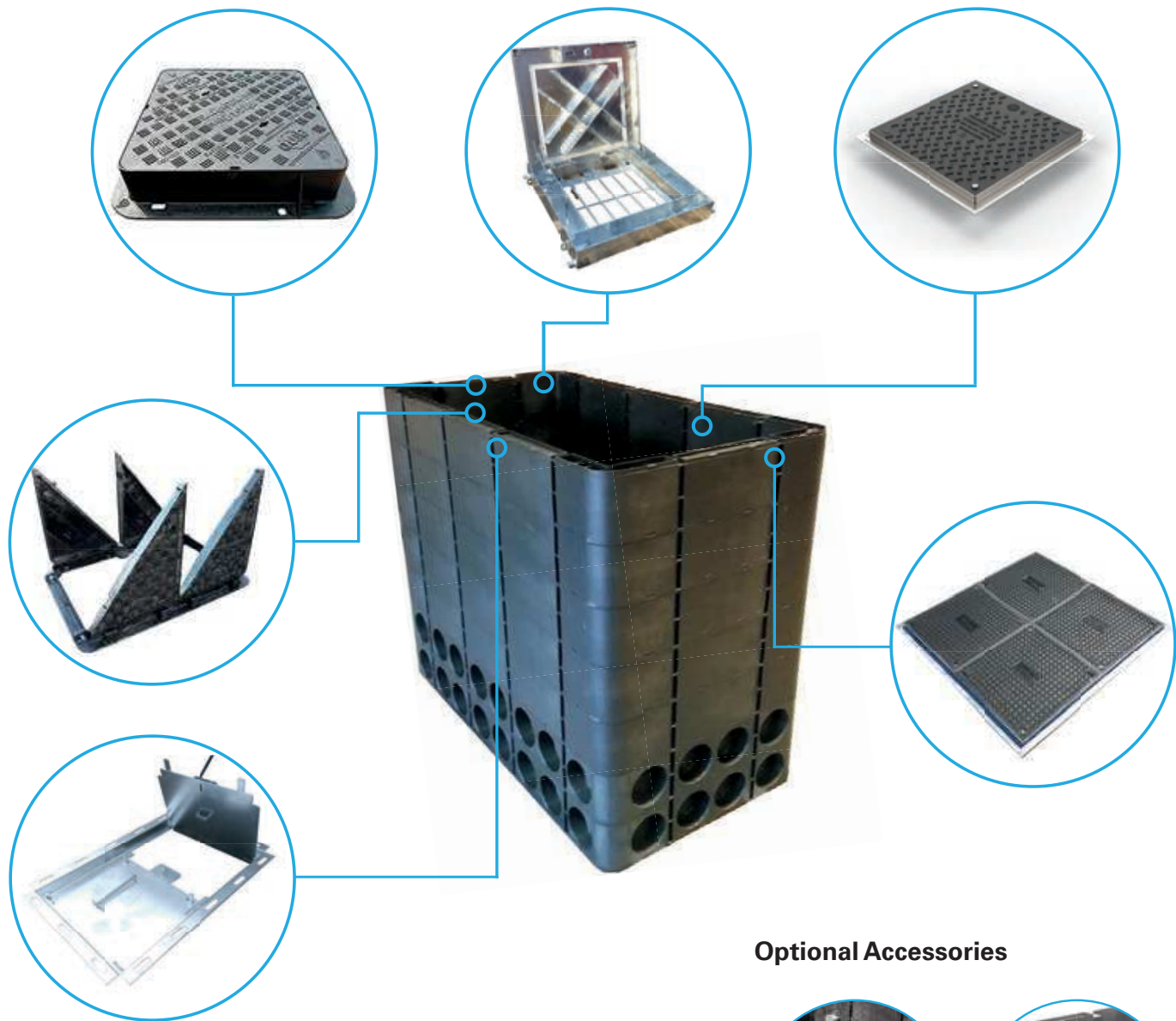
- Easy one way fit and construction.
- Lightweight system conforms to HSE recommendations.
- Strong twin wall structural design.
- Duct entry points easily knocked out with a hammer or cut with holesaw.
- Manufactured from a 100% recycled material.
- Larger sizes available in 150 mm increments.





# Multiple Opportunities

The NEXUS™ structural chamber has been designed to work in conjunction with a vast range of EJ access covers and frames. This flexibility allows you to use the NEXUS™ chamber in a variety of applications including, Motorway Communications, Traffic Signals, Street Lighting, MOD and Turning Pit applications.



## Optional Accessories



Bearer Bar & Brackets



Step Irons with Anti tear fixing plates



ACCESS CHAMBERS

Non-structural



Assembled



Assembled with Raiser



Assembled with Cover

DATUM™ Non-structural Chambers

Standard Sizes

EJ Code	Clear Opening (mm)	O/all Dim (mm)	Depth (mm)	Entry Points
MC1	275 x 295	374 x 394	380	8
MC2	450 x 300	545 x 390	380	10
MC3	450 x 450	550 x 550	380	12
MC4	600 x 450	690 x 545	380	14
MC5	600 x 600	680 x 680	380	16
MC7	900 x 450	1020 x 545	380	18

Raiser Units

MC2/R	450 x 300	545 x 390	250	-
MC3/R	450 x 450	550 x 550	250	-
MC4/R	600 x 450	690 x 545	250	-
MC5/R	600 x 600	680 x 680	250	-

DATUM™ Benefits

- Easy one way fit and installation.
- Lightweight system conforms to HSE recommendations.
- Single wall design.
- Duct entry points easily cut with holesaw.
- Manufactured from a 100% recycled material.
- Composite covers & frames designed to suit.

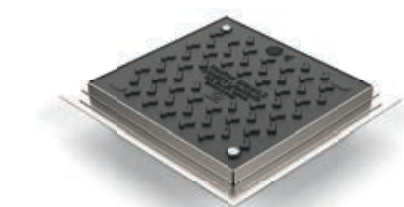
DATUM™ Features

- Single Wall
- Non-structural
- High Strength & Rigidity
- Duct Entry Cut-outs
- B 125 Applications when encased in concrete

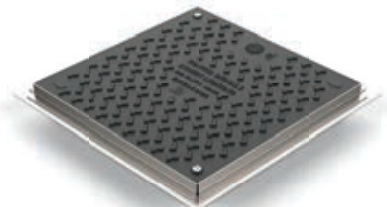
## COMPOSITE COVERS

### Anti-Slip Covers & Frames

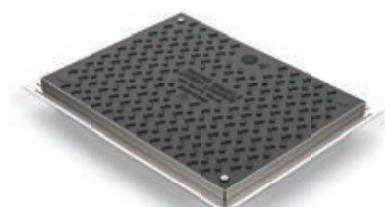
EN124-5:2015  
Fully certified



IDS ELITE 3030B



IDS ELITE 4545B



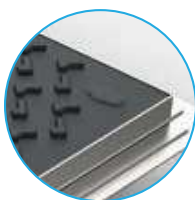
IDS ELITE 4560B

### IDS® ELITE Composite Covers

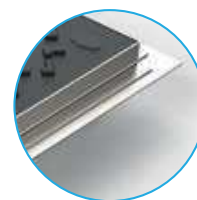
Standard Sizes

Product	Code	Nominal Size (mm)	Description	Covers	Weight (Kg)
IDS ELITE 3030B	CSF3030EN	300 x 300	B 125 Cover & Galvanised Steel Frame	1	6
IDS ELITE 3045B	CSF3045EN	300 x 450	B 125 Cover & Galvanised Steel Frame	1	9
IDS ELITE 4545B	CSF4545EN	450 x 450	B 125 Cover & Galvanised Steel Frame	1	11
IDS ELITE 4560B	CSF4560EN	450 x 600	B 125 Cover & Galvanised Steel Frame	1	13
IDS ELITE 6060B	CSF6060EN	600 x 600	B 125 Cover & Galvanised Steel Frame	1	16
IDS ELITE 9045B	CSF9045EN	900 x 450	B 125 Cover & Galvanised Steel Frame	2	45
IDS ELITE 9060B	CSF9060EN	900 x 600	B 125 Cover & Galvanised Steel Frame	2	53
IDS ELITE 9090B	CSF9090EN	900 x 900	B 125 Cover & Galvanised Steel Frame	4	78
IDS ELITE 12060B	CSF12060EN	1200 x 600	B 125 Cover & Galvanised Steel Frame	2	62
IDS ELITE 12090B	CSF12090EN	1200 x 900	B 125 Cover & Galvanised Steel Frame	4	93

Compatible with NEXUS and DATUM

Protective UV  
surface layer

Closed keyways

4L® Raised  
Anti-Slip PatternStainless Steel  
lockingNSAI EN 124-5  
certificationGalvanised Steel  
Frames

SWITCH™ Pole Retention System



SWITCH™



SWITCH™ Top



SWITCH™ Duck Foot Bend

SWITCH™ Pole Retention

Standard Sizes

EJ Code	O/all Height (mm)	Pole Planting Depth (mm)	Pole Diameter (mm)	Weight (kg)
SW115 450	450	335	115	38
SW115 600	600	485	115	39
SW115 750	750	635	115	40
SW115 900	900	785	115	42

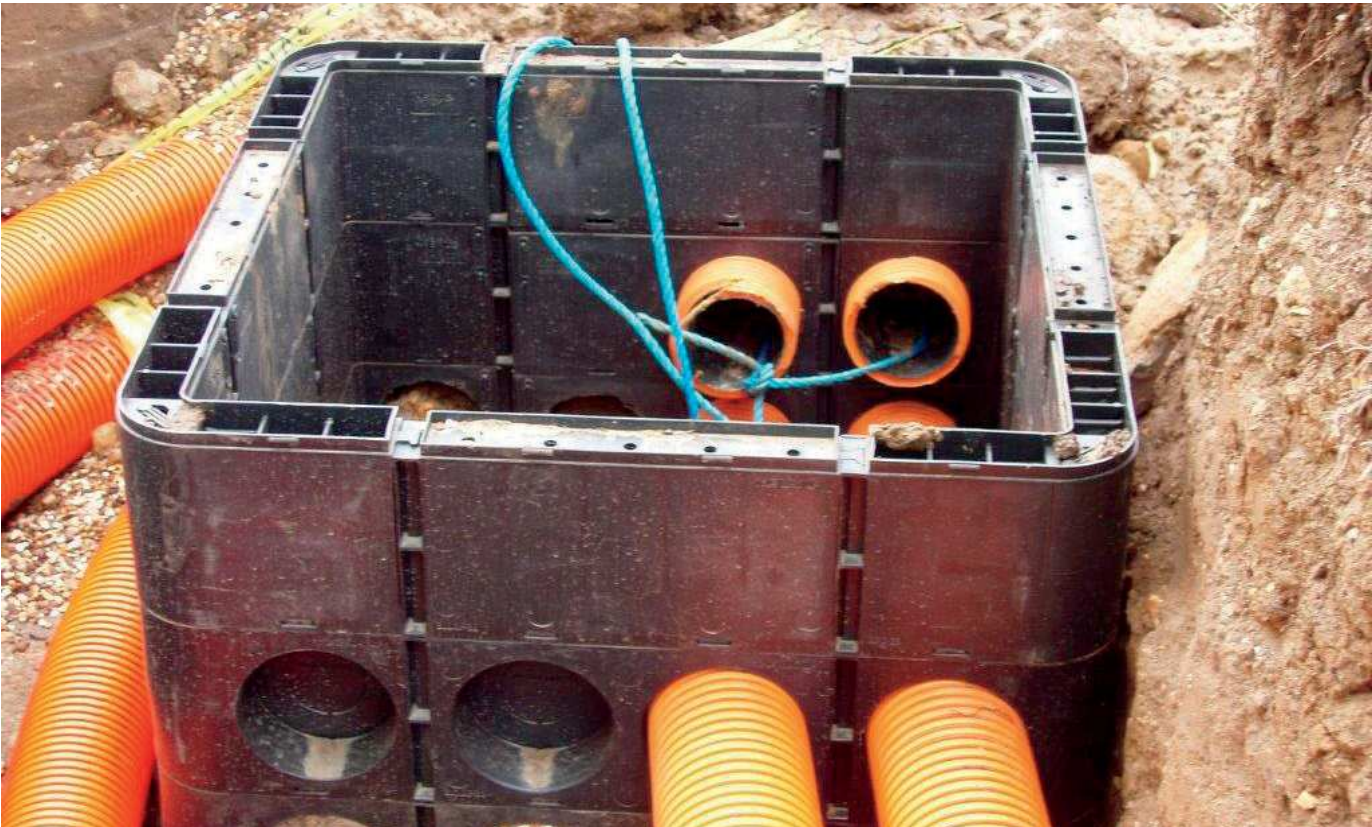
**SWITCH™** is a unique patented pole retention system which comprises of a high quality casting process and is engineered to securely retain in position all types of passive and non-passive street furniture and posts. The system offers a top housing unit comprising of an integrated levelling system, storage for pavement plug, and Total Grip & Release clamping system. The Switch range has been extensively tested at a UKAS accredited test facility. The flexibility of the Switch range allows for variable heights with minor adjustments available to meet site requirements.



Crash Test

Independent testing was carried out at a UKAS accredited test facility. Two SWITCH™ sockets were installed in the ground and a traffic signal post was inserted into each socket, 2 tests were then carried out where the posts were impacted by a car travelling at 100km/h and at 35km/h. The damaged posts were retained by the socket and were then removed in under 2 minutes with basic tools.









ejco.com



#### Nuneaton

tel +44 (0) 24 7664 1777  
fax +44 (0) 24 7637 5250  
uk.sales@ejco.com

#### Wakefield

tel +44 (0) 1924 258 381  
fax +44 (0) 1924 258 382  
uk.sales@ejco.com

#### Nuneaton

Liberty House  
Liberty Way - Nuneaton  
CV11 6RZ - UK

#### Wakefield

York House  
Asdale Road - Wakefield  
WF2 7JE - UK

#### Product Guide

Access Cover & Gully Grating  
EJ © - 2020