

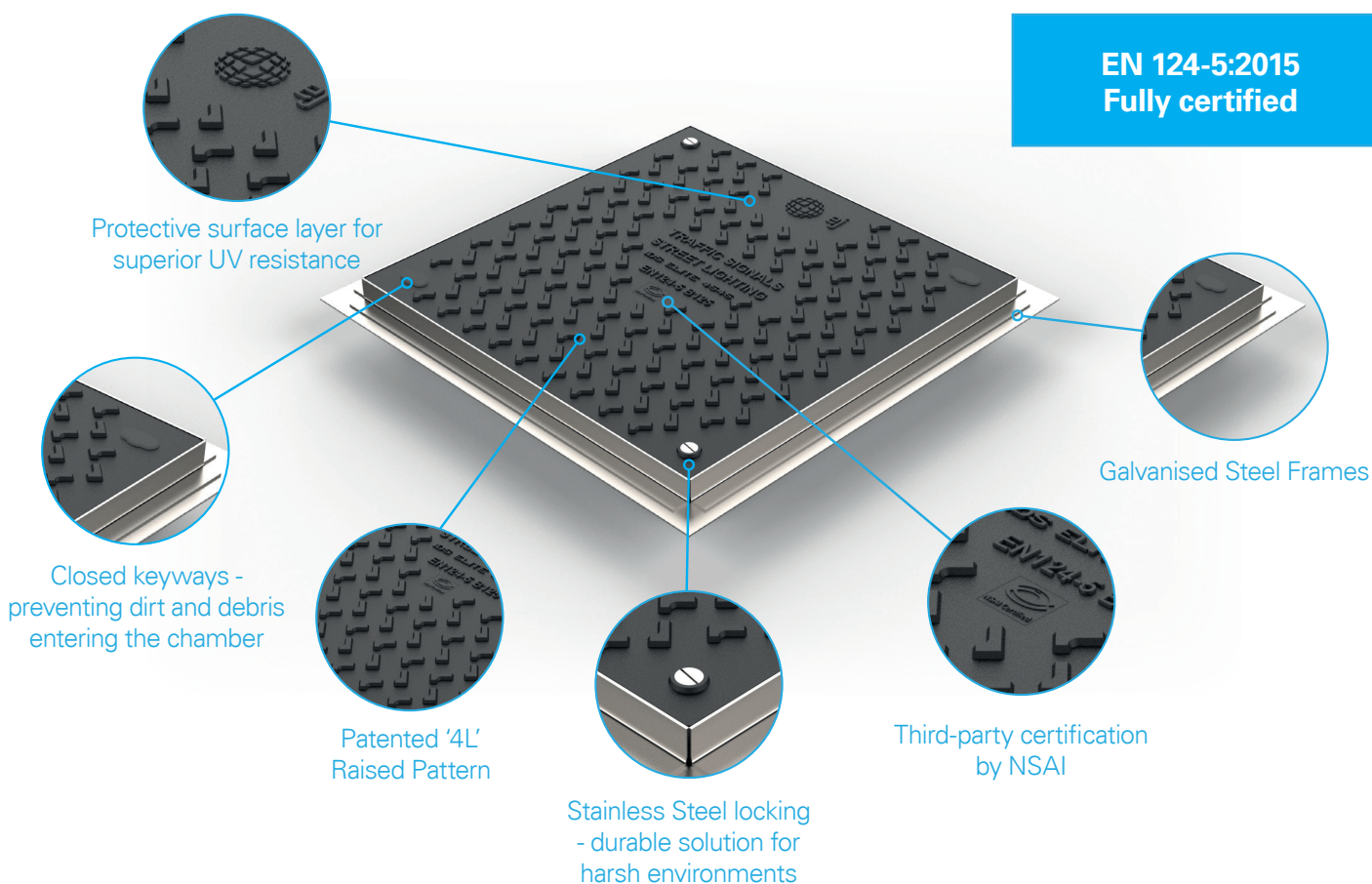


# IDS Access Cover & Chamber System

Designed for traffic signals and street lighting applications

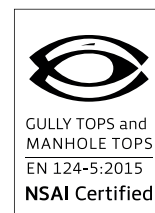
## Key Features of the IDS ELITE Access Cover

- Light-weight, easy to handle and install, up to 70% lighter than the iron equivalent
- Corrosion resistant even in the most aggressive environments
- No resale value to the scrap market
- No signal interference with wireless communication devices
- Non-conductive of stray voltage or heat
- Coarse skid resistant upper surface featuring the trademarked 4L non slip pattern
- UV resistant protective surface layer



## Sizes

| Product Name   | Nominal Size (mm) | Loading | Weight - Cover only (Kg) |
|----------------|-------------------|---------|--------------------------|
| IDS ELITE 3030 | 300 x 300         | B 125   | 3                        |
| IDS ELITE 3045 | 300 x 450         | B 125   | 4.5                      |
| IDS ELITE 4545 | 450 x 450         | B 125   | 5.5                      |
| IDS ELITE 4560 | 450 x 600         | B 125   | 7                        |
| IDS ELITE 6060 | 600 x 600         | B 125   | 9                        |

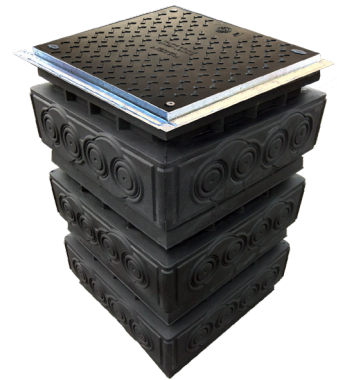




Assembled



Assembled with Raiser



Assembled with Cover

DATUM™ chamber systems are manufactured in one piece sections by rotational moulding for strength and rigidity. The system is made up of single stacking sections which can be stacked up to three sections high. Each section has pre-trepanned duct entry profiles for ease of pipe insertion. The chamber sections are manufactured to comply with NJUG guidelines, using 110 mm duct two chambers will give 463 mm depth of cover (typical of footway requirements) and three sections will achieve the required depth for under a road (793 mm). The chamber systems are manufactured in a wide range of sizes and are lightweight, and easy to install.

**Features:**

- High strength and rigidity
- Tapered interlocking skirt for stacking integrity
- Precision duct entry cut-outs
- Designed to ensure NJUG recommended depths of cover
- Cover and frame height and tilt adjustment
- Corrosion resistant
- Manufactured from 100% recycled and recyclable material

**Benefits:**

- Easy one way fit and installation
- Lightweight system conforms to HSE recommendations (Health & Safety Executive, UK)
- Single wall design
- Duct entry points easily cut with holesaw
- Composite covers & frames designed to suit

**Standard Sizes**

| Code | Clear Opening (mm) | O/all Dim (mm) | Depth (mm) | Entry Points |
|------|--------------------|----------------|------------|--------------|
| MC1  | 275 x 295          | 374 x 394      | 380        | 8            |
| MC2  | 450 x 300          | 545 x 390      | 380        | 10           |
| MC3  | 450 x 450          | 550 x 550      | 380        | 12           |
| MC4  | 600 x 450          | 690 x 545      | 380        | 14           |
| MC5  | 600 x 600          | 680 x 680      | 380        | 16           |

**Raiser Units**

|       |           |           |     |   |
|-------|-----------|-----------|-----|---|
| MC2/R | 450 x 300 | 545 x 390 | 250 | - |
| MC3/R | 450 x 450 | 550 x 550 | 250 | - |
| MC4/R | 600 x 450 | 690 x 545 | 250 | - |
| MC5/R | 600 x 600 | 680 x 680 | 250 | - |

